



United States Department of Agriculture

Native Riparian Vegetation Beneficial for Holding Together Creeks and Rivers in Urban Areas



Ricky Linex
Wildlife Biologist
Natural Resources Conservation Service
Weatherford, Texas

*Water willow, **Justica americana***
Honey Creek, Llano Co.

Natural
Resources
Conservation
Service

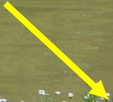
Wilson Creek, Collin Co.



Black willow, American & Cedar elms,
Green ash, Bur oak, Box elder maple, Pecan

Bosque River, Bosque Co.

Water willow, *Justica americana*

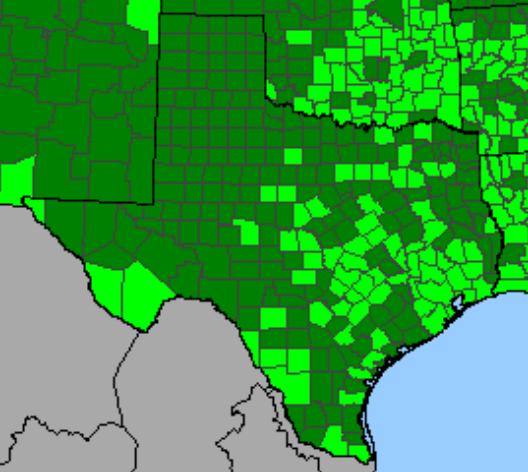


Water primrose, *Ludwigia peploides*



Emory sedge, *Carex emoryii*





Water Primrose
Colonizer: OBL; SR=3

Water primrose
Colonizer; OBL; SR=3





Water willow—Stabilizer
OBL; SR = 8



Water willow—Stabilizer

OBL; SR = 8

Water willow, *Justica americana*

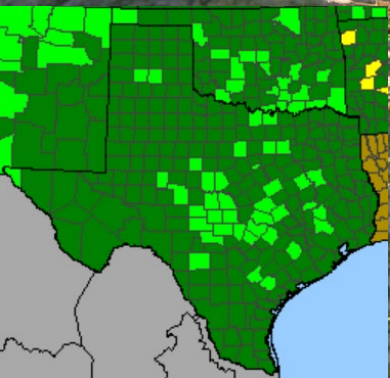




Emory sedge – Stabilizer
OBL; SR =9

Palo Pinto Co.

Emory sedge, *Carex emoryii*

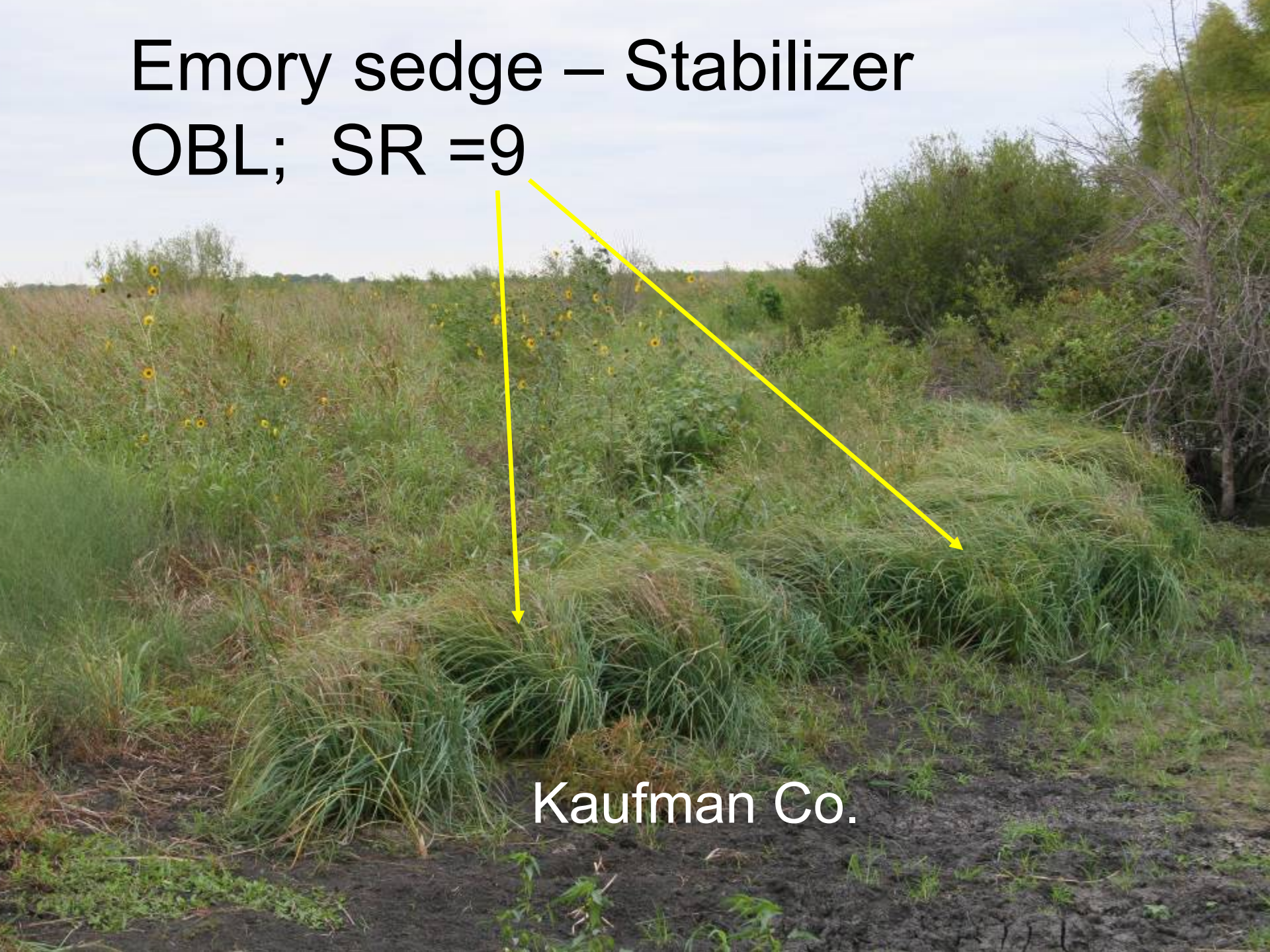


Emory sedge – Stabilizer

OBL; SR = 9



Emory sedge – Stabilizer
OBL; SR =9




Kaufman Co.

Emory sedge – Stabilizer
OBL; SR = 9



Tarrant Co.



Emory sedge – Stabilizer
OBL; SR =9

Bell County

Emory sedge

May 15, 2008



Emory sedge

November 17, 2008



July 31, 2008



May 15, 2008



Emory sedge

November 17, 2008



February 20, 2019

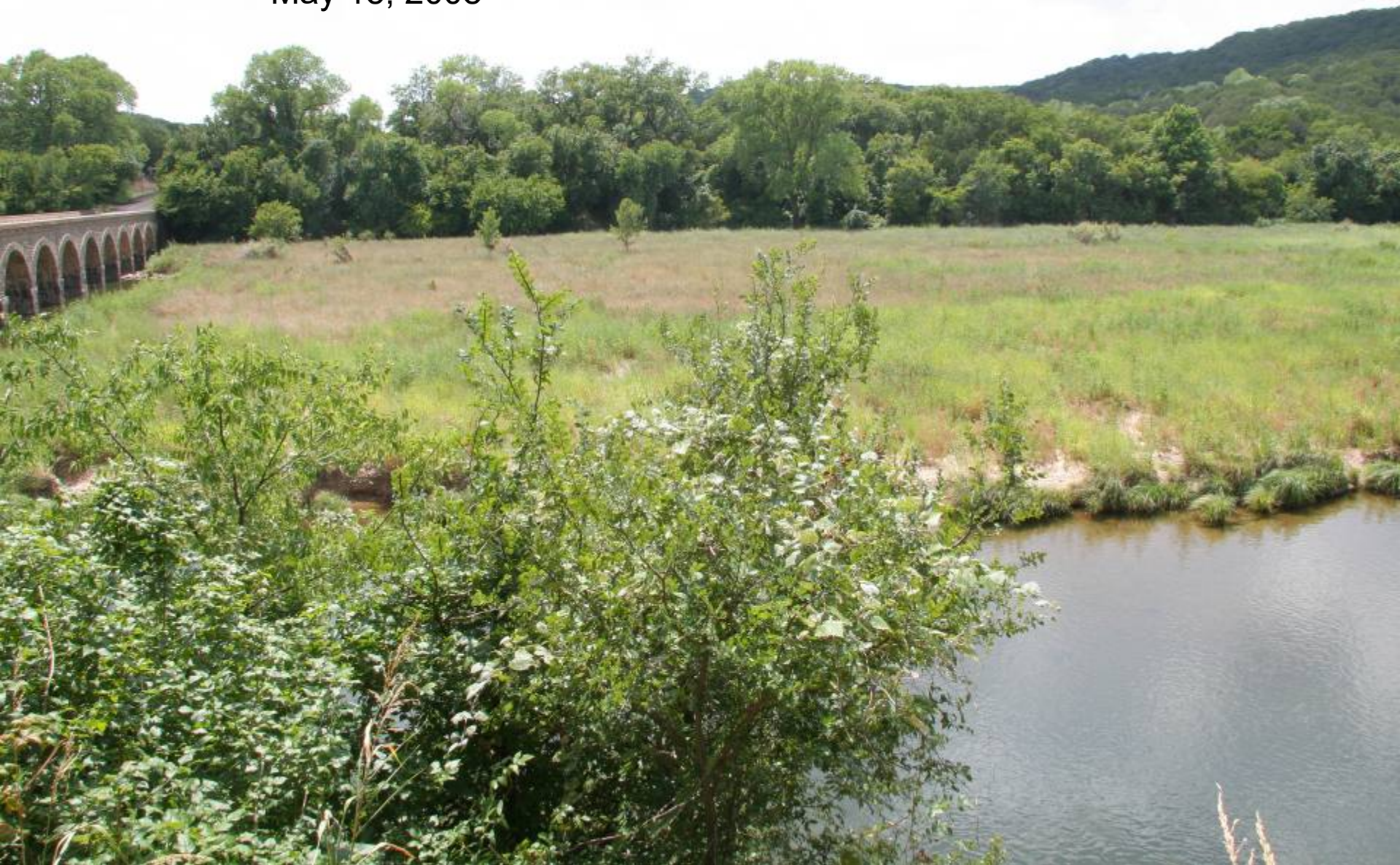


July 31, 2008





May 15, 2008



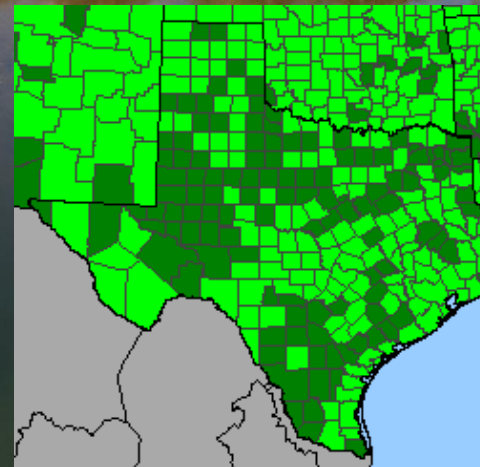
November 17, 2008



Switchgrass

Panicum virgatum

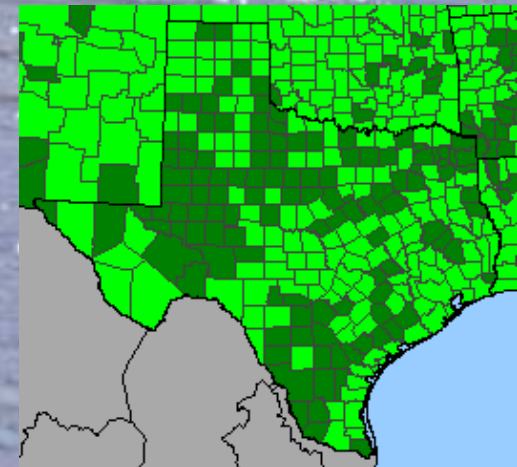
Stabilizer; FAC; SR = 9



February 20, 2019



Switchgrass
Panicum virgatum
Stabilizer; FAC; SR = 9





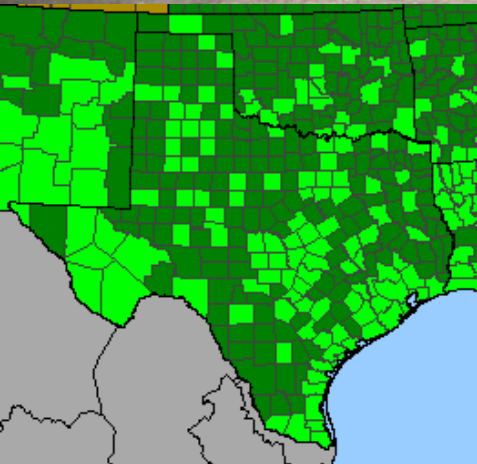
Switchgrass
Panicum virgatum
Stabilizer; FAC; SR = 9

Knotgrass – Colonizer/Stabilizer
FACW; SR = 6



Knotgrass – Colonizer/Stabilizer

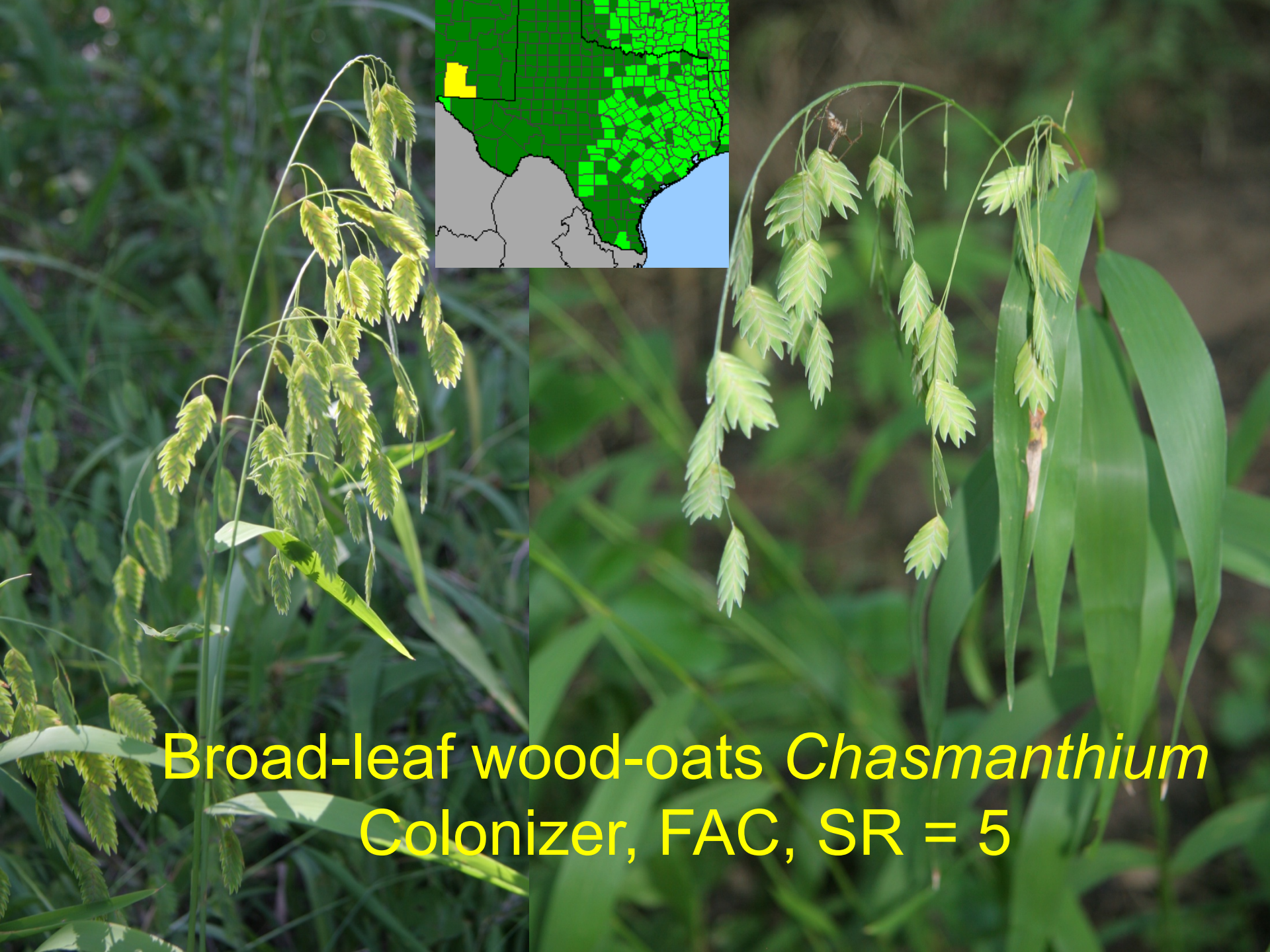
FACW; SR = 6



Knotgrass – Colonizer/Stabilizer

FACW; SR = 6





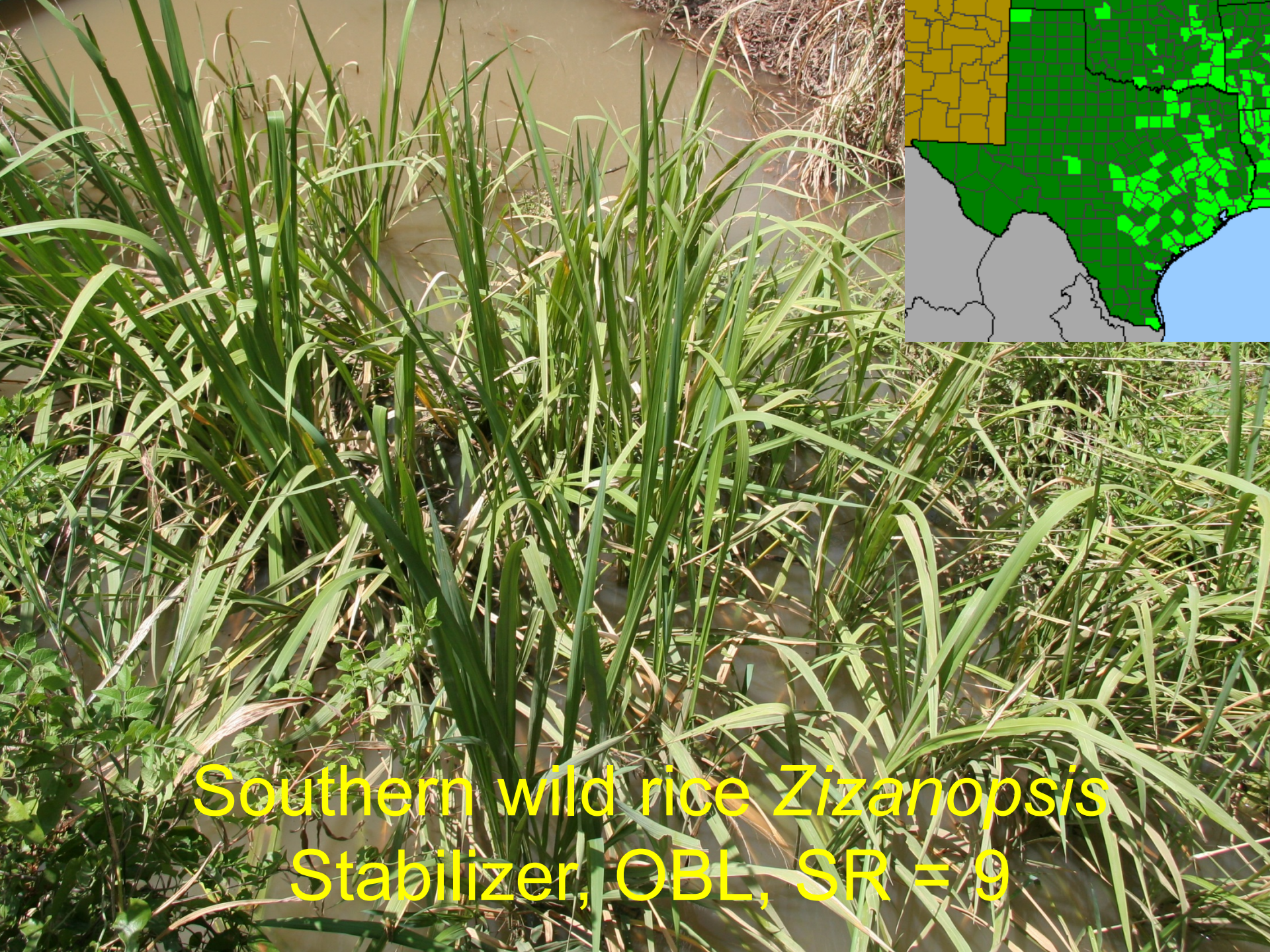
Broad-leaf wood-oats *Chasmanthium*
Colonizer, FAC, SR = 5



Broad-leaf wood-oats *Chasmanthium*
Colonizer, FAC, SR = 5



Broad-leaf wood-oats *Chasmanthium*
Colonizer, FAC, SR = 5

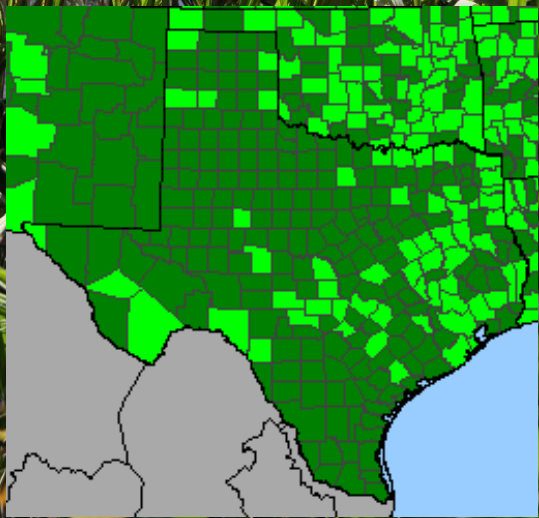
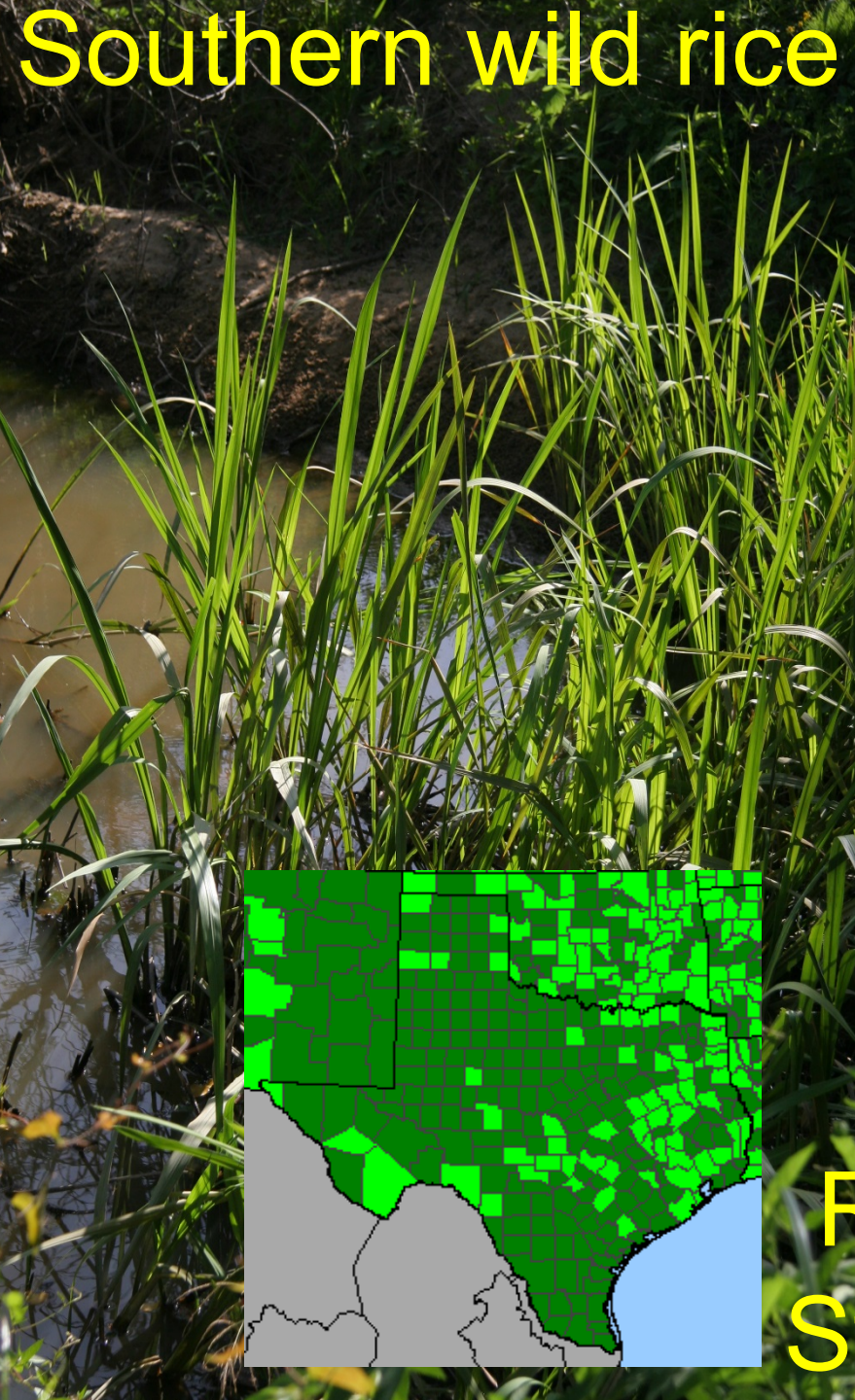


Southern wild rice *Zizanopsis*
Stabilizer, OBL, SR = 9



Southern wild rice *Zizanopsis*
Stabilizer, OBL, SR = 9

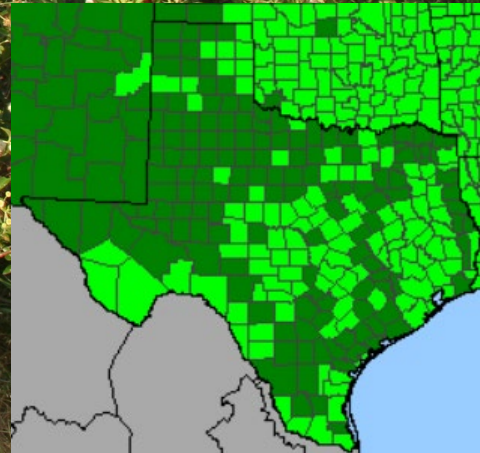
Southern wild rice



Rice cutgrass *Leersia*
Stabilizer, OBL, SR = 5

Buttonbush, Buttonwillow, *Cephalanthus occidentalis*

Stabilizer; OBL; SR=8

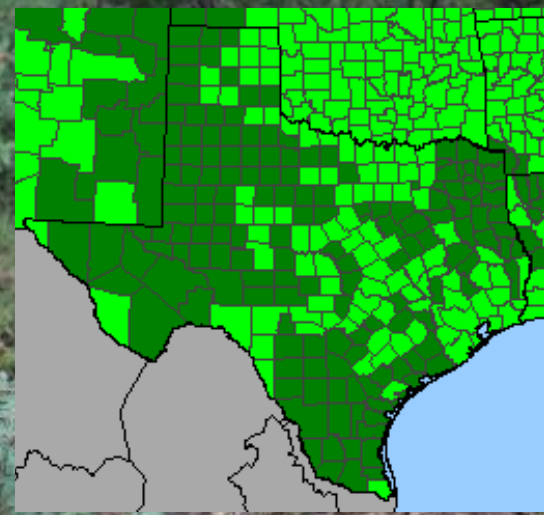
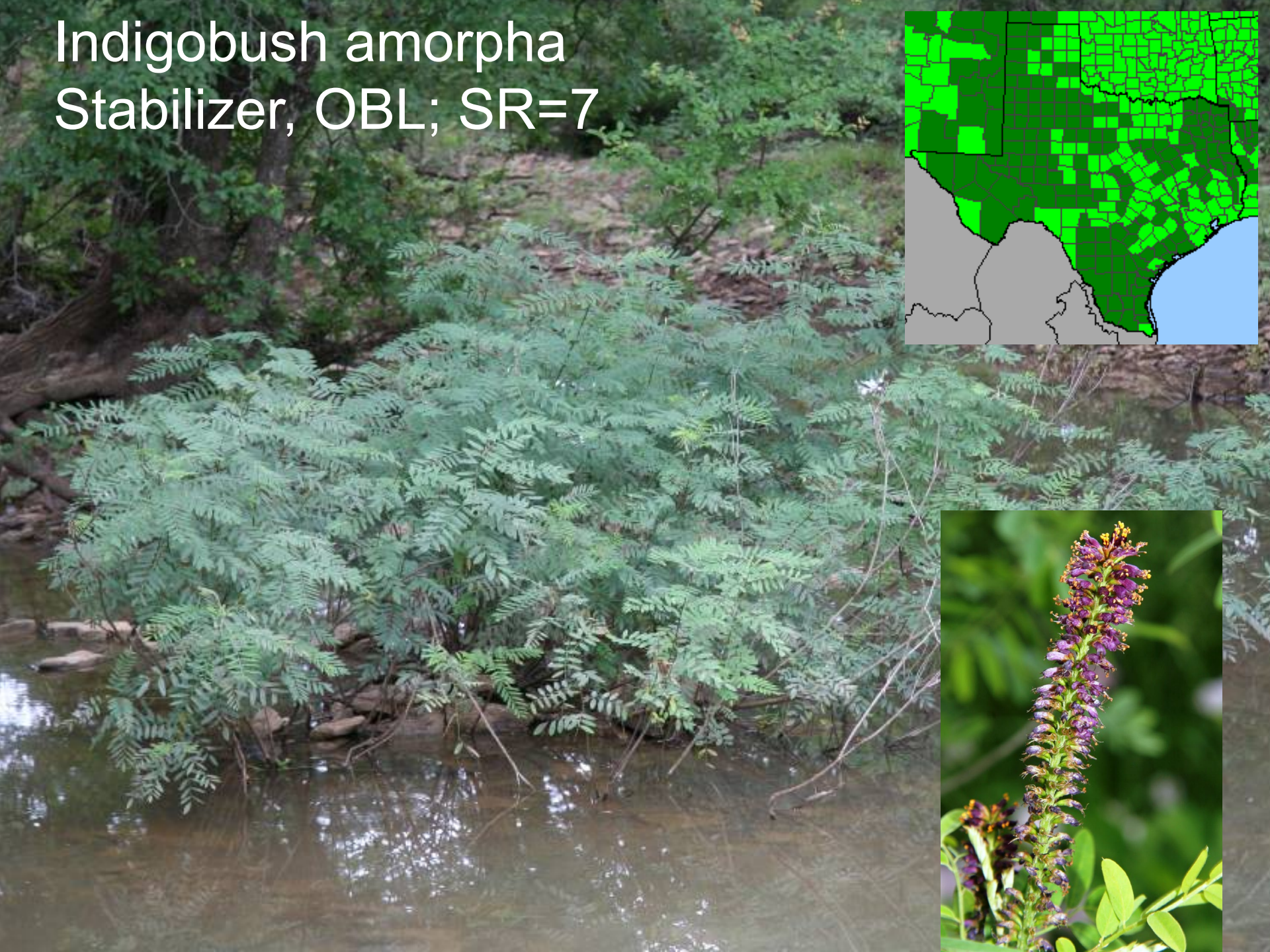


Buttonbush, Buttonwillow, *Cephalanthus occidentalis*



Indigobush amorpha

Stabilizer, OBL; SR=7



Randy Johnson organicrandy@gmail.com

John Snowden txgrassman@gmail.com

Greenhouse located in Kaufman County

December 1, 2018

... 438 1 gallon 'Alamo' switchgrass &
82 flats 4 inch Broadleaf woodoats - 1,300 total.
We stand ready to contract grow buttonbush,
Indigobush amorpha, cardinal flower, just
about anything...