

HOUSTON PARKS RIPARIAN RESTORATION PLAN



Kelli Ondracek, Natural Resources Manager

A CAPRA Accredited Agency

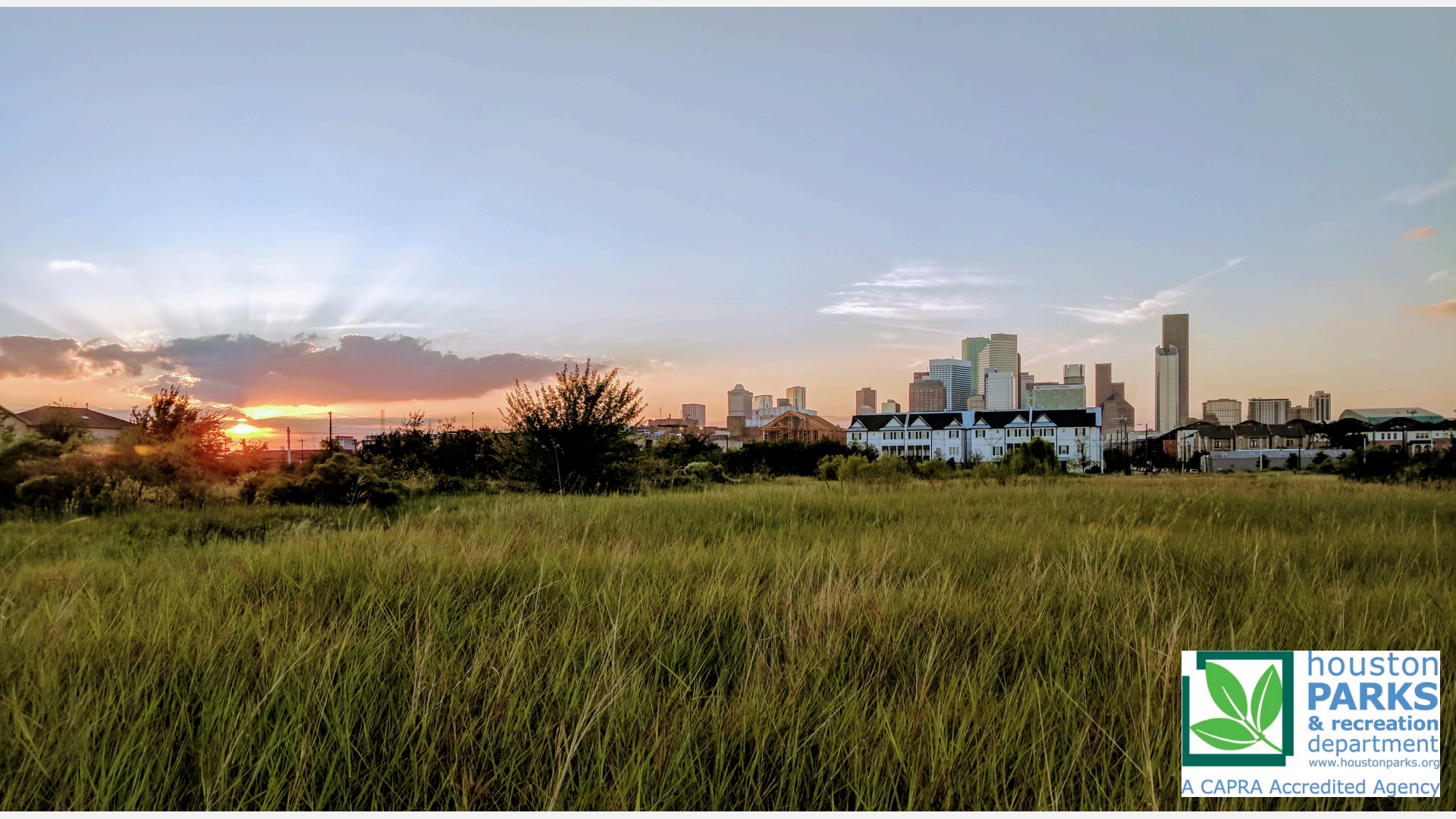


NATURAL RESOURCES MANAGEMENT PROGRAM

- 374 Parks, 36,000 Acres
- 80 Natural Areas, 16,000 acres
- Preservation
- Restoration
- Outreach and Education

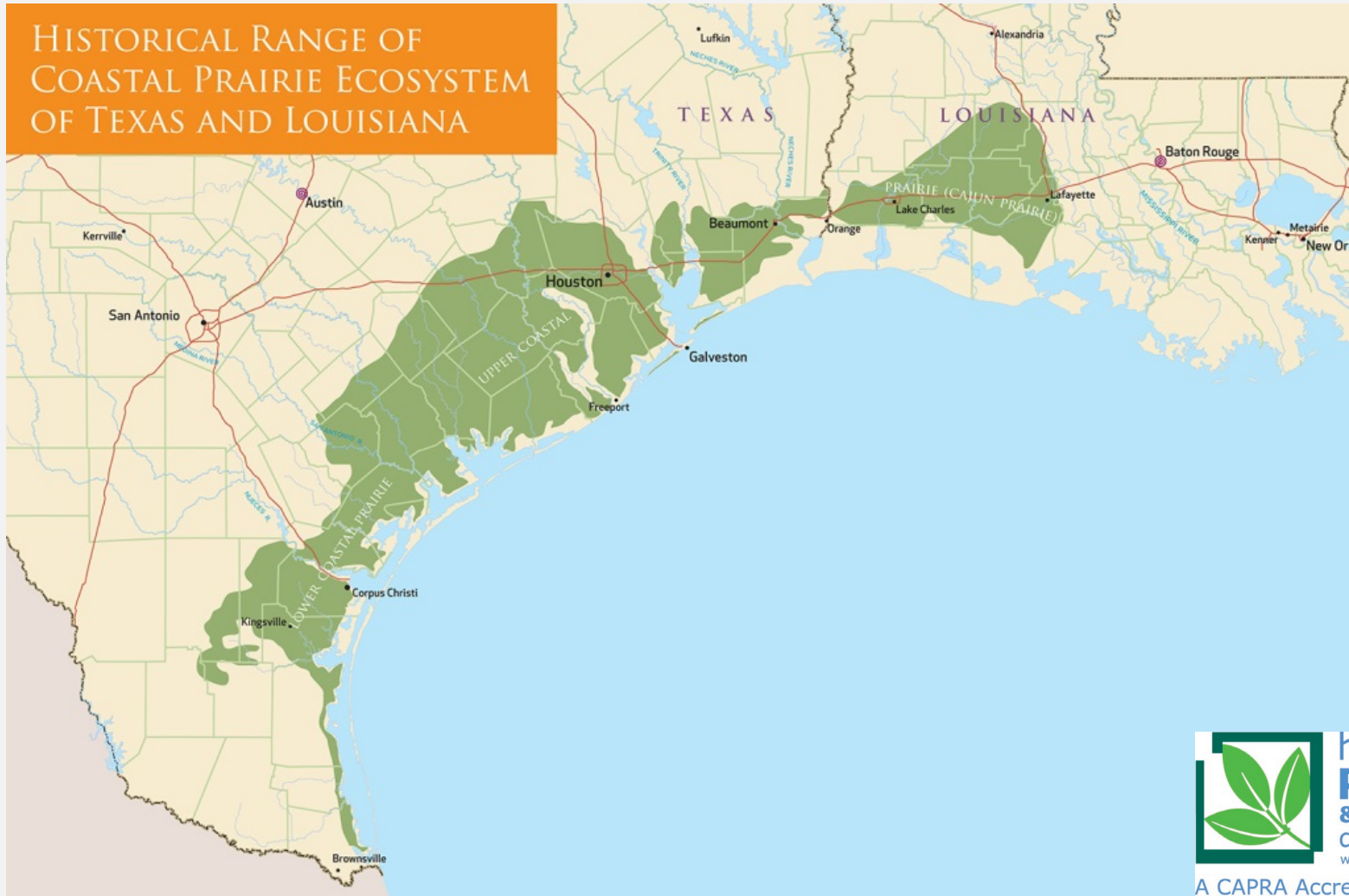


HOUSTON'S HISTORY

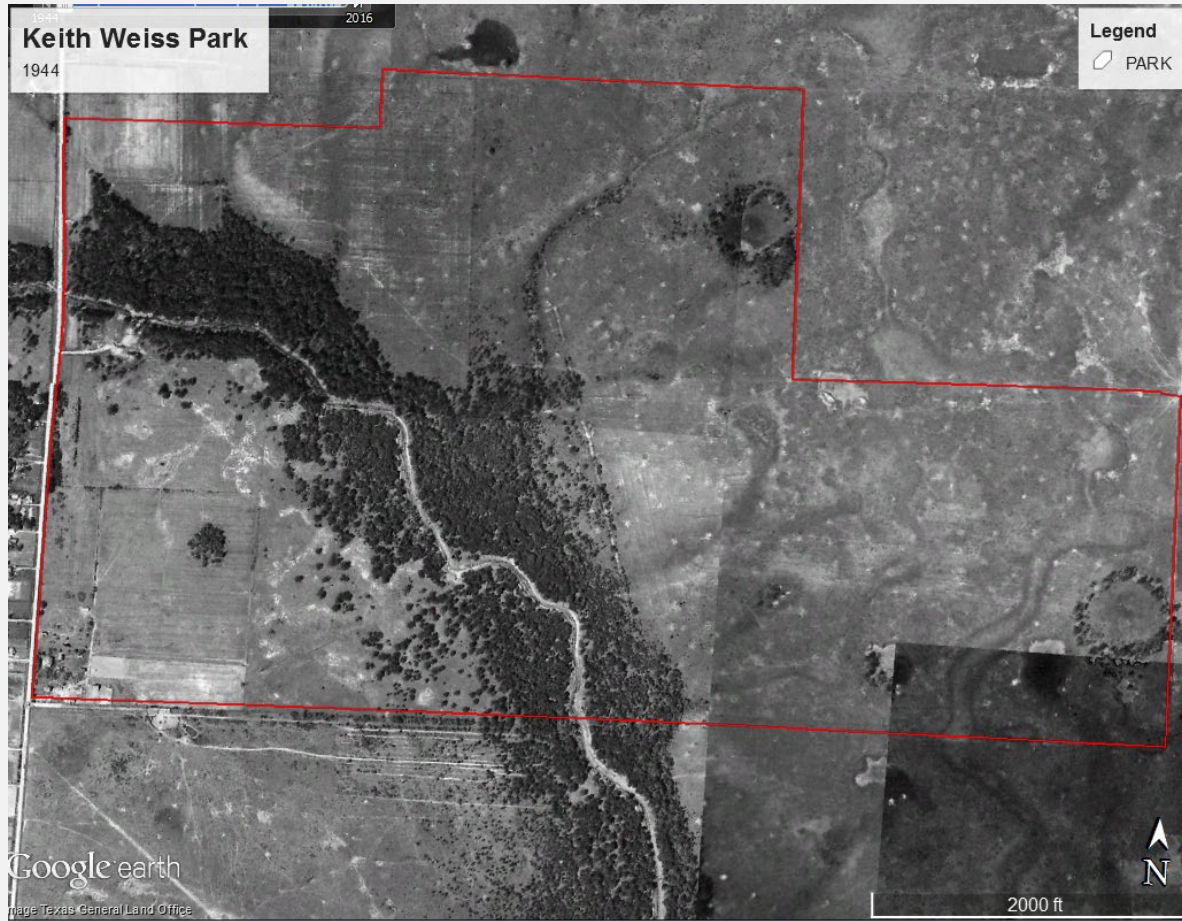


COASTAL PRAIRIE

HISTORICAL RANGE OF
COASTAL PRAIRIE ECOSYSTEM
OF TEXAS AND LOUISIANA



RIPARIAN FOREST



NATURAL CHANNEL



CONCRETE CHANNEL



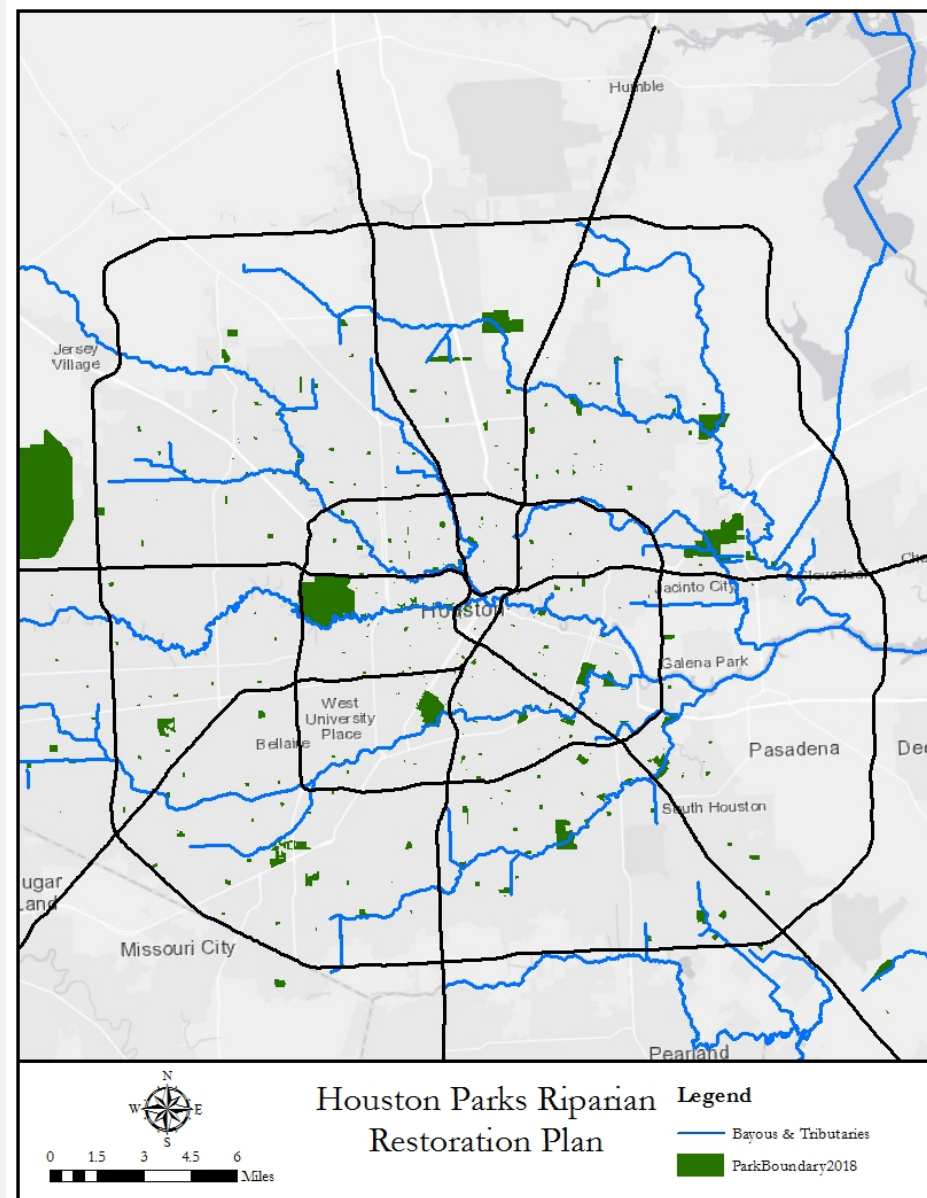
HOUSTON'S PARKS RIPARIAN RESTORATION PLAN

70 Parks Adjacent to Bayou

100 to 200 foot buffers

Over 1,000 acres to be restored

Over 240,000 trees to be planted



RIPARIAN RESTORATION

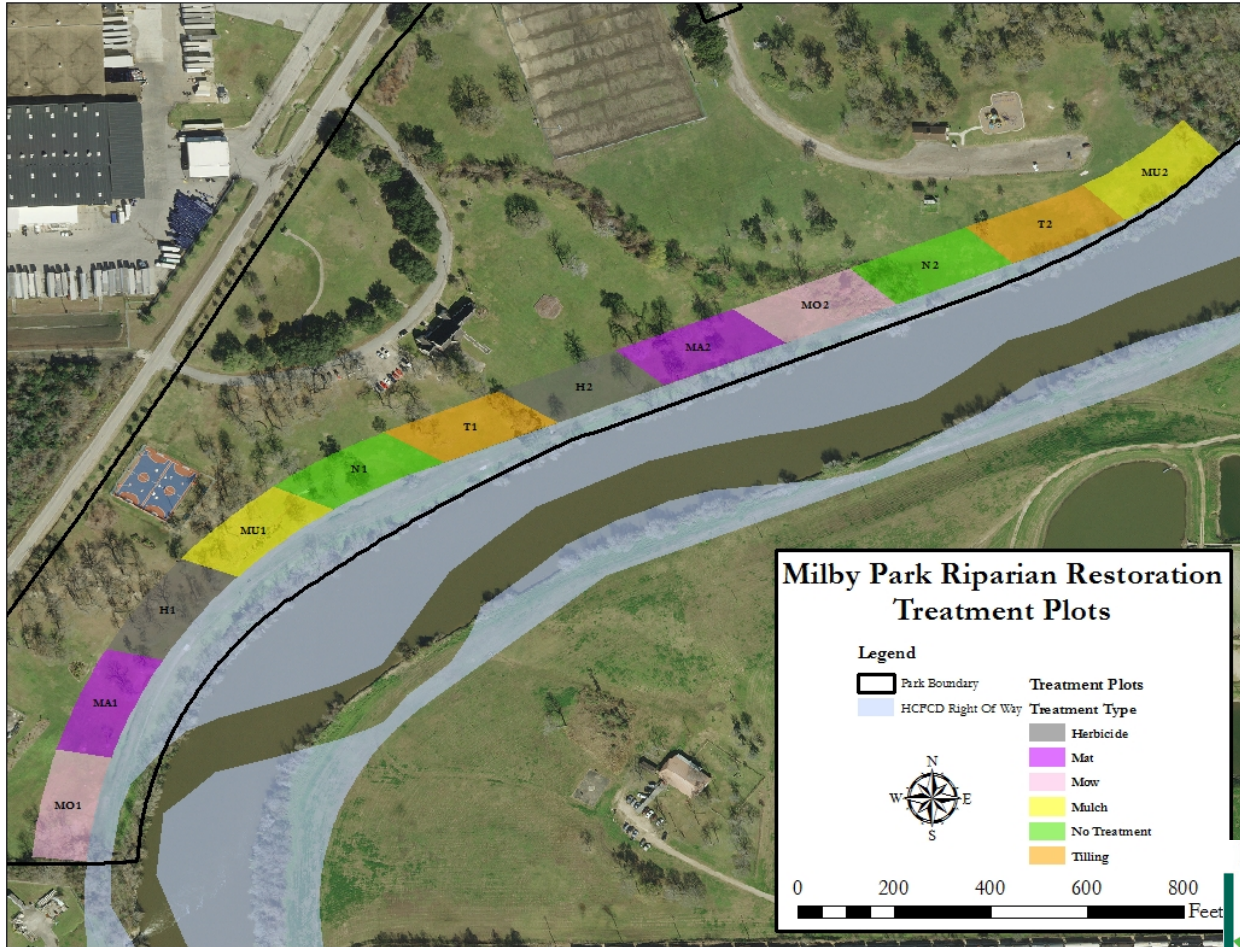
CREATION



ENHANCEMENT



PILOT PROJECTS: CREATION



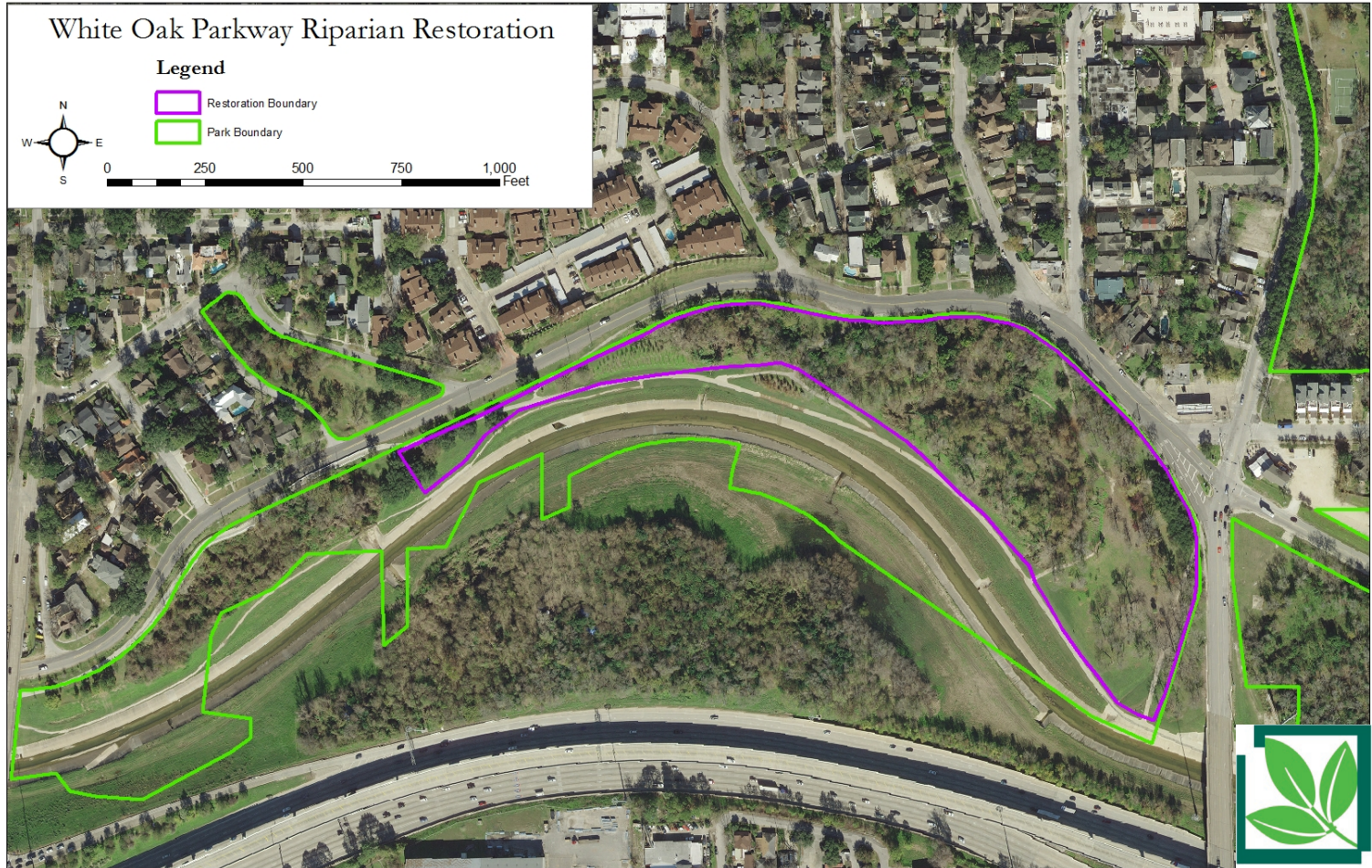
PILOT PROJECTS: CREATION



PILOT PROJECTS: CREATION



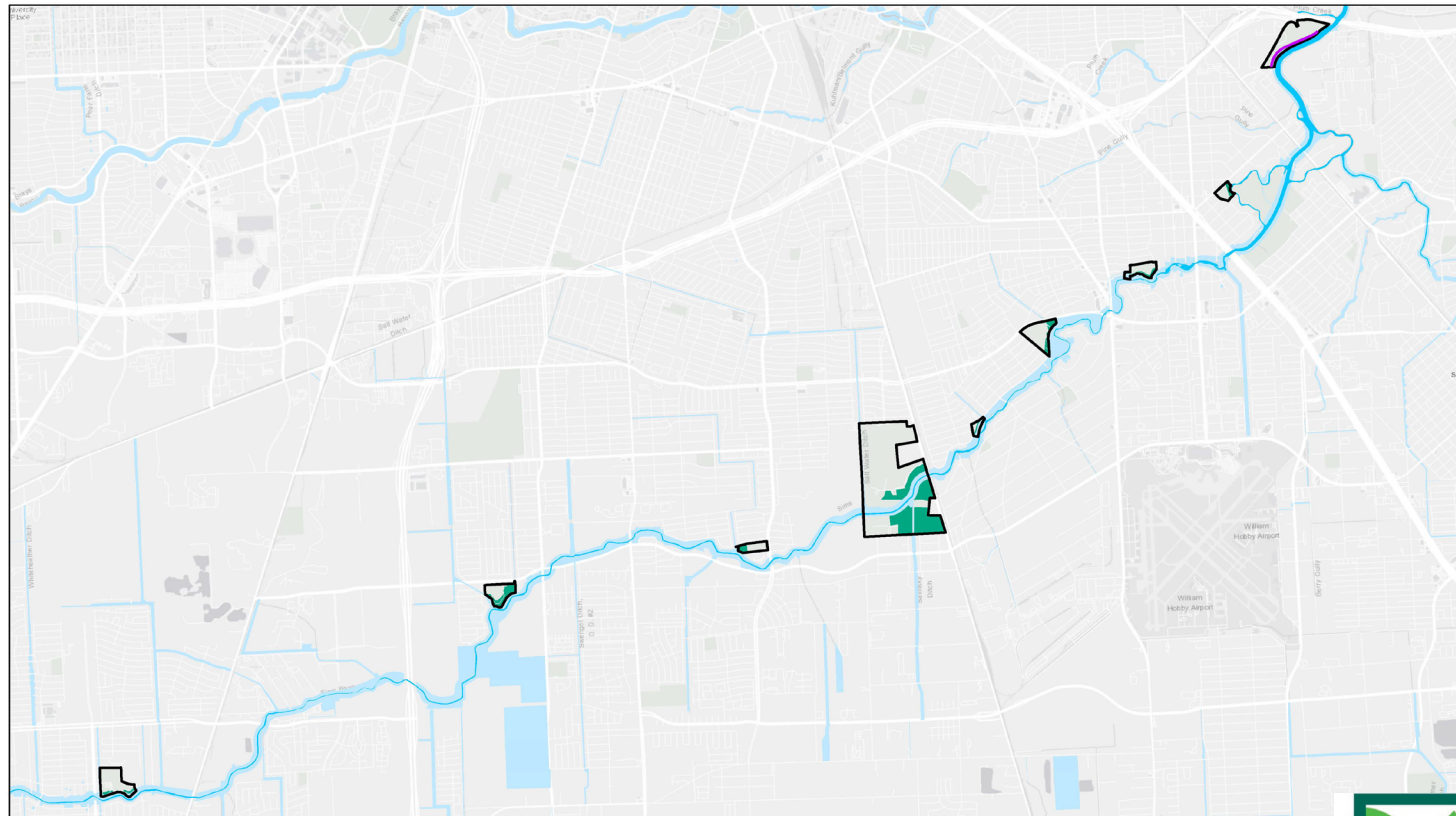
PILOT PROJECTS: ENHANCEMENT



PILOT PROJECTS: ENHANCEMENT



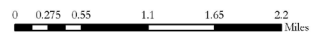
SIMS BAYOU



Legend

-  Sims Bayou
-  Riparian Buffer - Complete
-  HCPCD Row
-  Riparian Buffer - Proposed
-  Park Boundary

Houston Parks Riparian Restoration Project - Sims Bayou



**houston
PARKS
& recreation
department**
www.houstonparks.org

A CAPRA Accredited Agency

BEST MANAGEMENT PRACTICES

Vegetation Monitoring

Species

Woody and Vines

Ailanthus altissima (Tree of Heaven)

Triadica sebifera (Chinese Tallow Tree)

Ligustrum sinense (Chinese Privet)

Ligustrum lucidum (Wax-leaf Privet)

Melia azedarach (Chinaberry)

Morus alba (White Mulberry)

Ulmus parvifolia (Chinese Elm)

Lonicera japonica (Japanese Honeysuckle)

Dioscorea bulbifera (Air Potato)

Cinnamomum camphora (Camphor Tree)

Lygodium japonicum (Japanese Climbing Fern)

Macfadyena unguis-cati (Catclaw Vine)

Koeleria paniculate (Goldenrain Tree)

Forbs and Grasses

Colocasia esculenta (Elephant Ear)

Rosa bracteata (McCartney Rose)

Bidens pilosa (Beggars' Ticks)

Arundo donax (Giant Reed)

Alternanthera philoxeroides (Alligator Weed)

Cyperus enterianus (Deep-rooted Sedge)

Sorghum halepense (Johnson Grass)

Urochloa maxima (Guinea Grass)

Bothriochloa ischaemum (King Ranch Bluestem)

Dichanthium aristatum (Angleton Bluestem)

Dichanthium annulatum (Kleberg Bluestem)

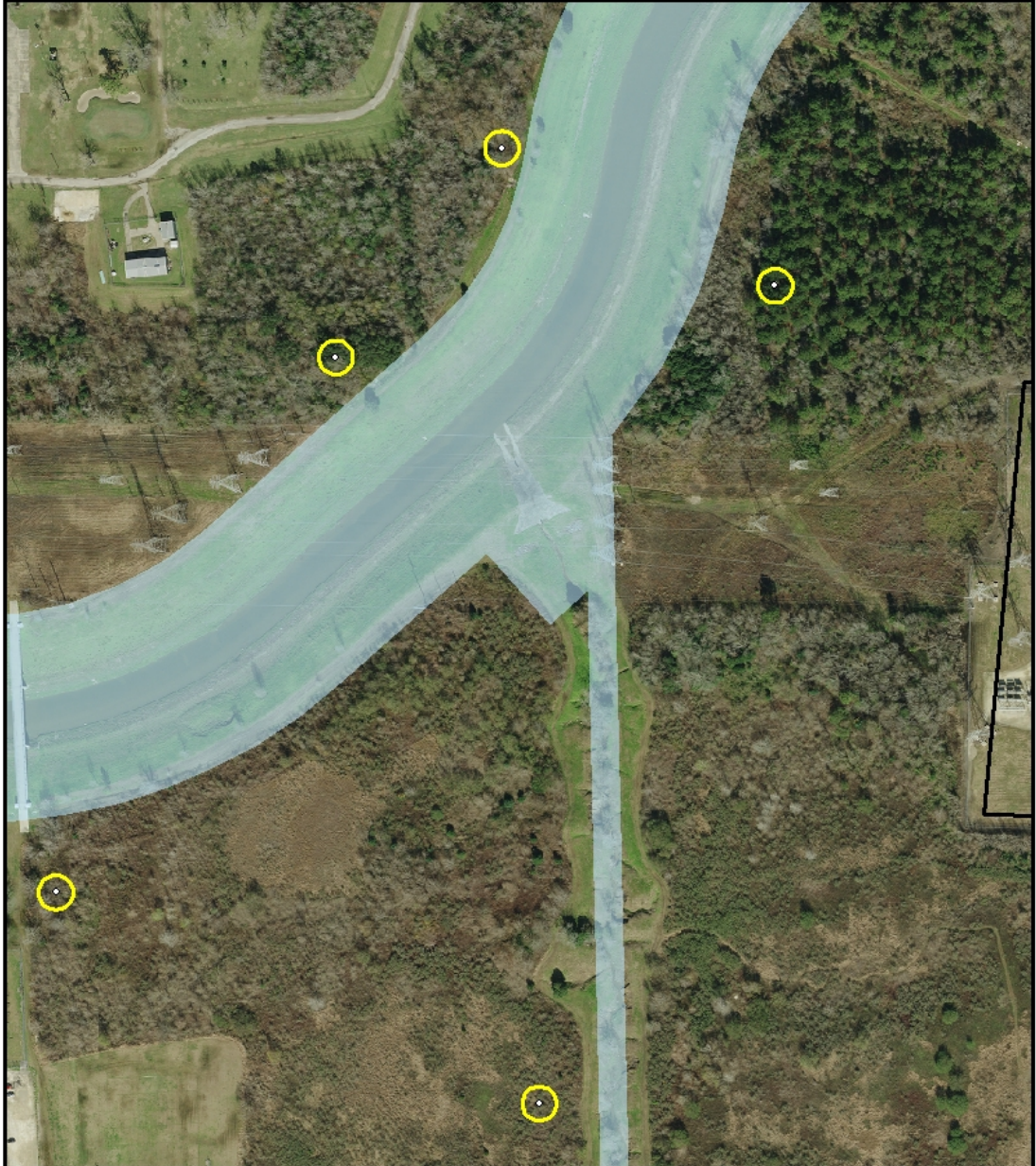
Paspalum urvillei (Vasey Grass)

Lantana camara (Common Lantana)


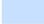

Paspalum dilatatum (Dallis Grass)

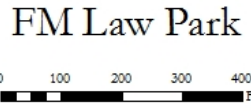
Lolium multiflorum (Italian Rye Grass)

Verbena brasiliensis (Brazilian Vervain)



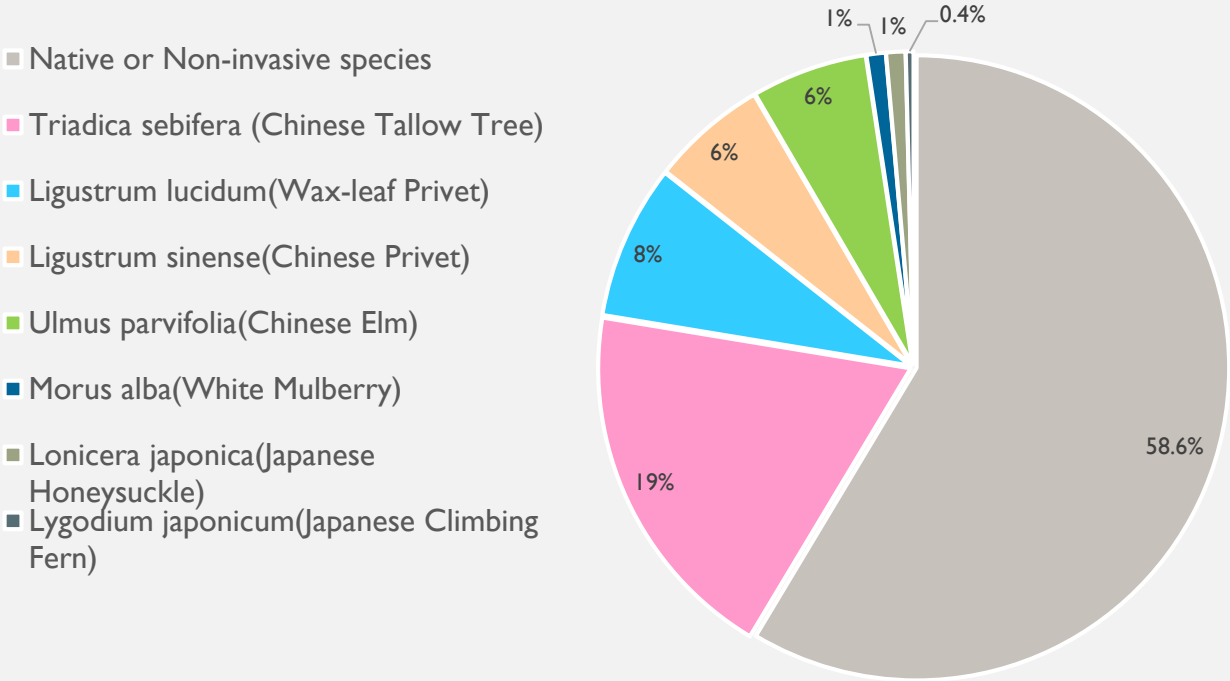
Legend

-  Park Boundary
-  Invasive Plots
-  HCFCD ROW
-  30-ft. Buffer







FM LAW PARK

Average Percent Cover



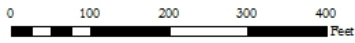


Legend

-  Park Boundary
-  Invasive Plots
-  HCPCD ROW
-  30-ft. Buffer

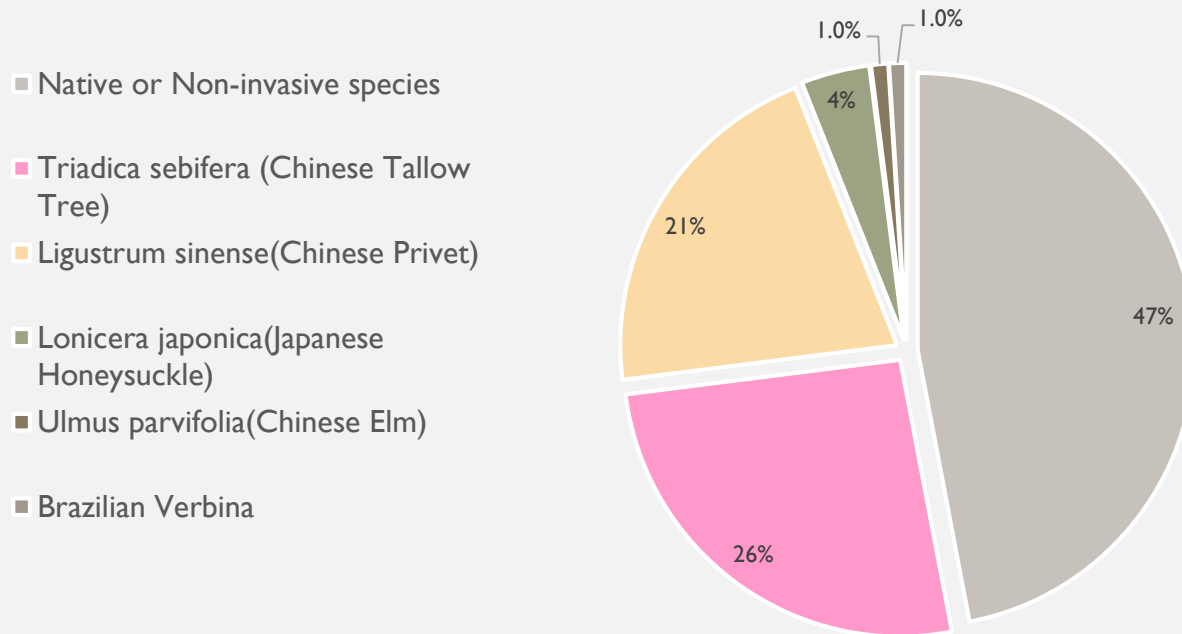


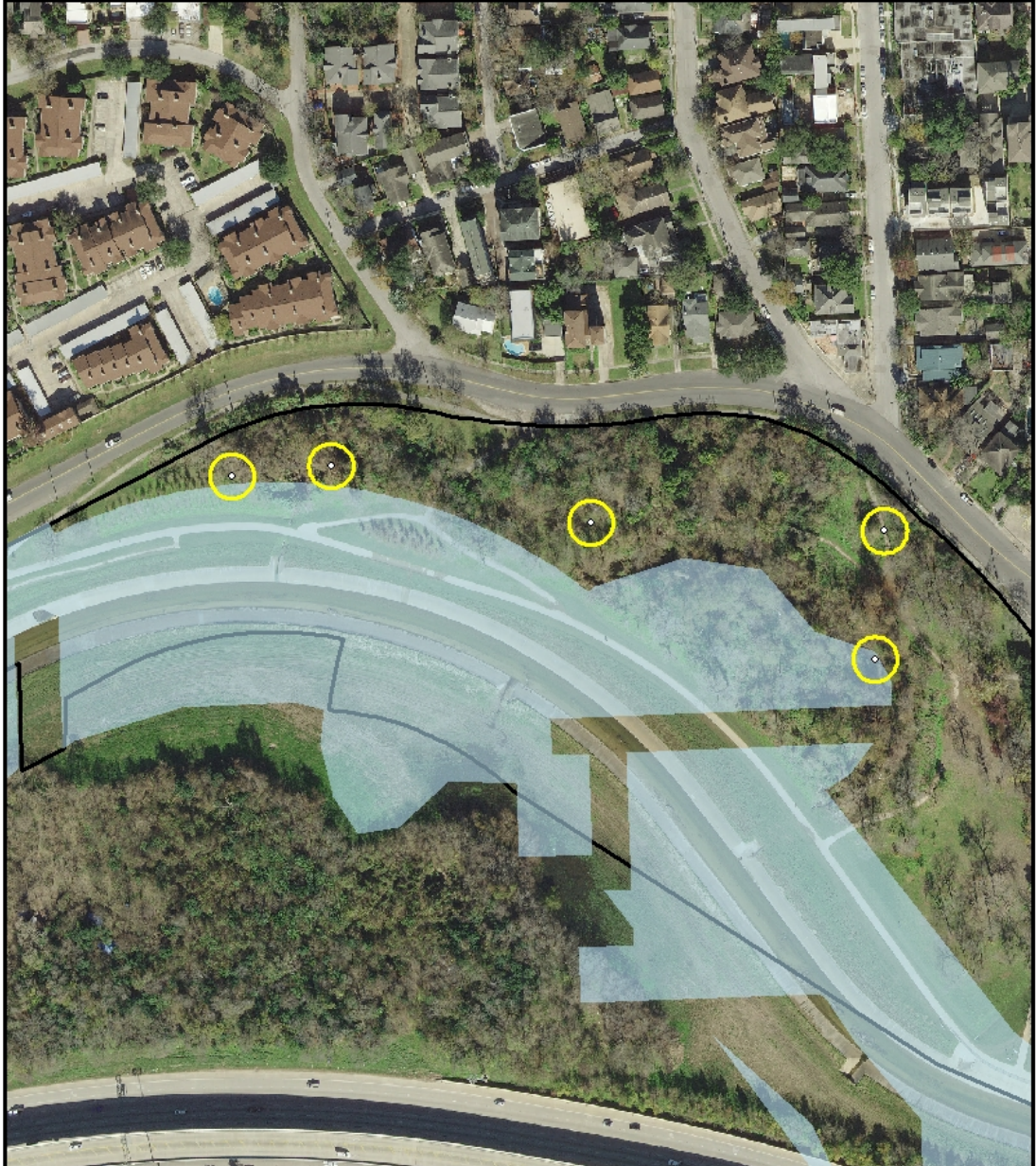
Sylvan Rodriguez Park





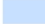

SYLVAN RODRIGUEZ PARK

Percent Cover



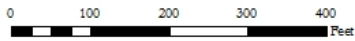


Legend

-  Park Boundary
-  Invasive Plots
-  HCFCD ROW
-  30-ft. Buffer

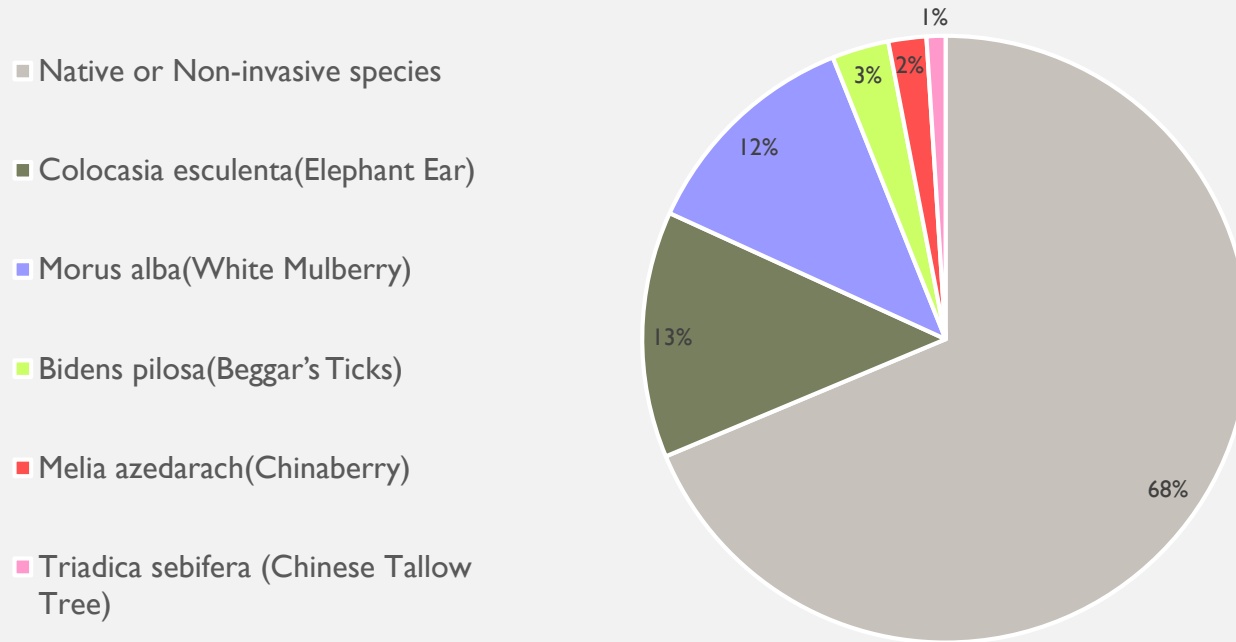


White Oak Parkway



WHITE OAK PARK

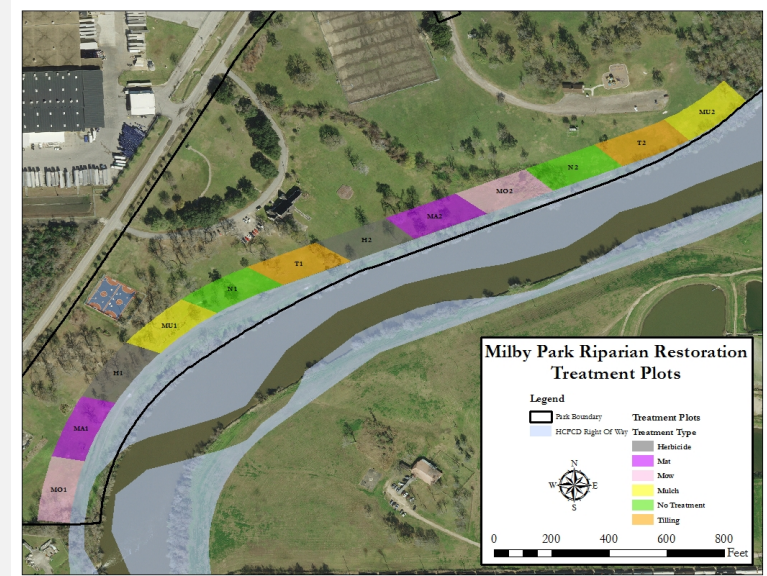
Percent Cover



BEST MANAGEMENT PRACTICES

Invasive Species Removal

- Herbaceous species suppression
- Tree spacing 10-ft.
- Remove and replace



BEST MANAGEMENT PRACTICES

Native Species Establishment

- 5 gallon vs. 15 gallon
- Increase species diversity
- Seeding
- Watering
- Mulching/staking

QUESTIONS?

