



Tarrant Regional Water District





Building and Maintaining Long-term Key Partnerships

TINA HENDON, SARAH GRELLA & MICHELLE WOOD-RAMIREZ

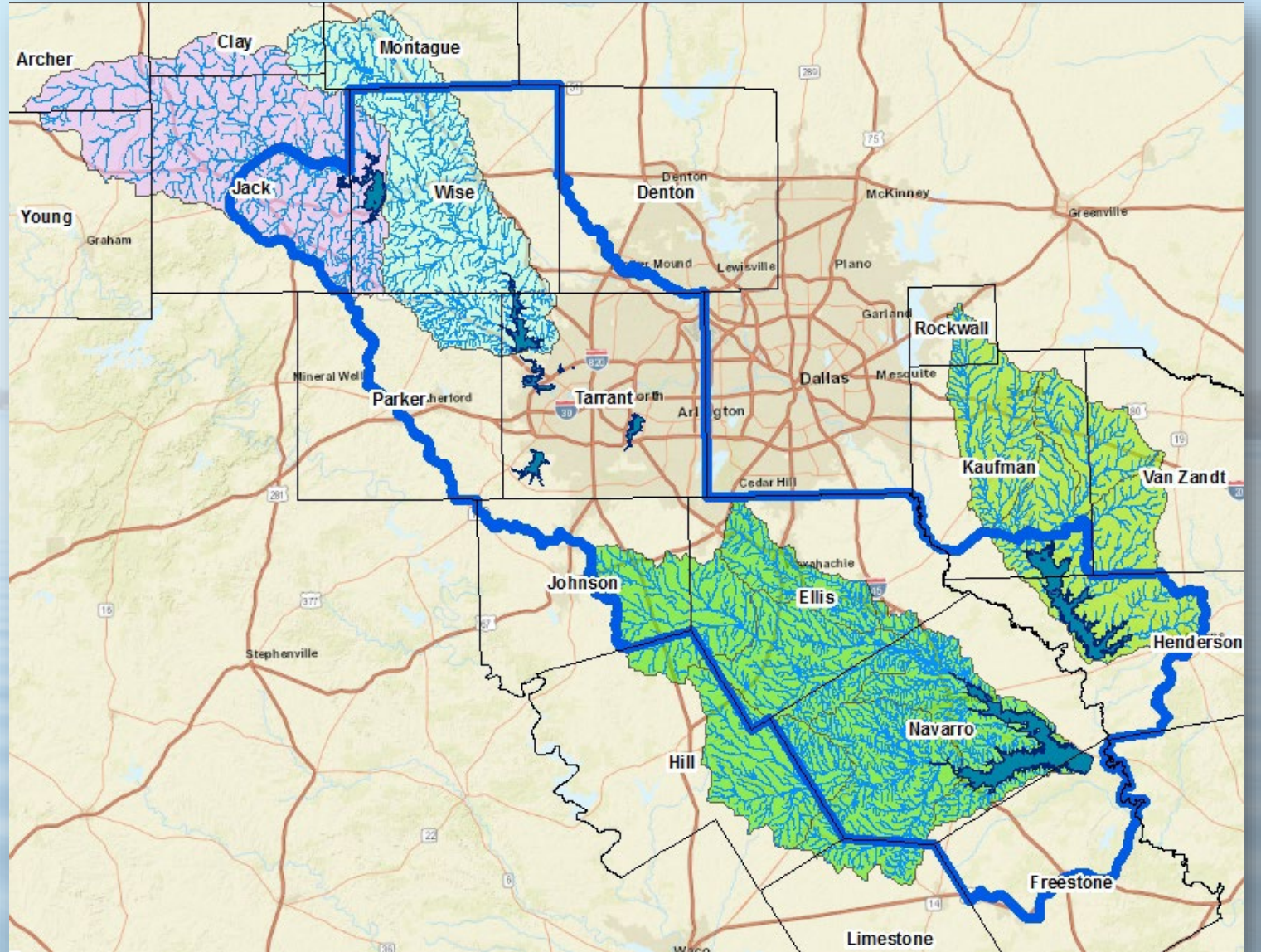


Tarrant Regional Water District

 water supply

 flood protection

 recreation





Texas Wildlife Association



**TEXAS
WILDLIFE
ASSOCIATION**

ISSUES & ADVOCACY



**TEXAS
WILDLIFE
ASSOCIATION**

CONSERVATION LEGACY



**TEXAS
WILDLIFE
ASSOCIATION**

HUNTING HERITAGE

Identify Program Mission Overlap



Communicate About Who You Know

Identify Priorities
&

Be Realistic About Constraints

Define Desired Community Impact

Be Open to Adaptation

Share Your Success

TRWD Watershed Program Mission



To focus on scientifically sound, stakeholder-driven strategies to implement sustainable & economically feasible land management & educational Initiatives that protect TRWD drinking water supplies & the Trinity River within the bounds of the Fort Worth Federal Floodway System.





Texas Wildlife Association Mission

Serving
Texas wildlife & its habitat,
while protecting property rights, hunting heritage, &
the conservation efforts of those
who value & steward wildlife resources.



Mission Overlap: WHO

TRWD

Stakeholder-Driven Strategies

TWA

Who Value & Steward Wildlife
Resources





Mission Overlap: WHAT

TRWD

Drinking Water Supplies & The Trinity
River

TWA

Texas Wildlife & Its Habitat





Mission Overlap: HOW

TRWD

Land Management & Educational
Initiatives

TWA

Conservation Efforts



Identify Program Mission Overlap



Communicate About Who You Know

Identify Priorities
&

Be Realistic About Constraints

Define Desired Community Impact

Be Open to Adaptation

Share Your Success



Educator Recruitment

Advertisement & Training

- Imagination Fort Worth
- TWA L.A.N.D.S. Intensive Training



CLICK FOR MORE INFO

L.A.N.D.S. TEACHER/VOLUNTEER TRAINING

WHO

- Educators: 6-8th, HS Environmental Science, Biology & Ag Science
- Volunteers: TX Master Naturalists or Gardeners, Private Biologists, Retired teachers, College students

WHEN

June 19 - 21, 2018

WHERE

Falcon Point Ranch

165 Falcon Point Rd., Seadrift, TX 77983

www.falconpointranch.com

COST

\$225 PER PERSON

(FOOD, 2 NIGHTS LODGING, MATERIALS)

EARN:

- 18 SBEC HOURS
- L.A.N.D.S. PROGRAM NOTEBOOK & FLASHDRIVE
- STEWARDING TEXAS ACTIVITIES
- PROJECT WILD CERTIFICATION
- OPPORTUNITIES TO "EARN" FIELD STUDY
- ABILITY TO NETWORK WITH OTHER EDUCATORS
- HANDS-ON/TEKS ALIGNED CLASS & FIELD ACTIVITIES

TOPICS TO INCLUDE:

- WATER CHEMISTRY
- AQUATIC MACRO-INVERTEBRATES
- QUAIL NECROPSY
 - ANATOMY
 - ADAPTATIONS
- WILDLIFE BASED SCIENTIFIC INQUIRY & LAB INVESTIGATIONS
- LAND MANAGEMENT
- QUAIL CSI
- RAINFALL SIMULATOR



Identify Program Mission Overlap

Communicate About Who You Know

Identify Priorities

&

Be Realistic About Constraints

Define Desired Community Impact

Be Open to Adaptation

Share Your Success

Priority: Riparian Awareness

Urban Waterways

- More Than A Ditch





Priority: Individual Responsibility

All Water is Recycled

- Runoff becomes someone's drinking water
- What can you do?



Constraint: Time Restriction

School System

- Prioritize Message
- Volunteer Availability





Identify Program Mission Overlap

Communicate About Who You Know

Identify Priorities
&

Be Realistic About Constraints

Define Desired Community Impact

Be Open to Adaptation

Share Your Success

Defined Impact Goals

Benefited Audience

- Students
- Volunteers
- Adult Chaperones



Defined Impact Goals

Assessment & Feedback

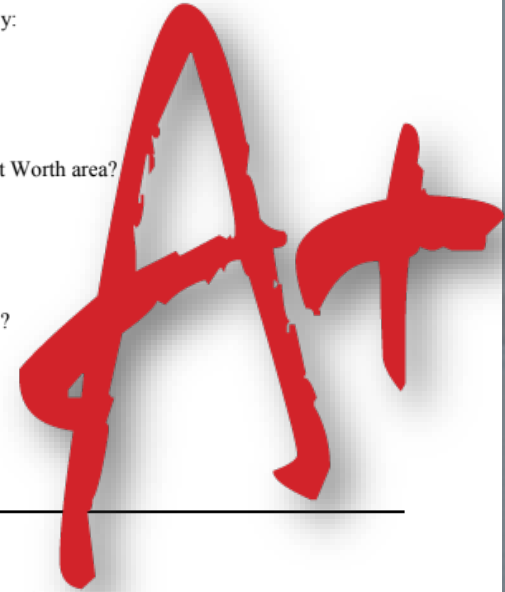
- Students
- Volunteers
- Educators

Name _____

Date _____

Trinity River Project Pre-Assessment

1. Most of Earth's Surface is covered by:
 - a. land
 - b. fresh water
 - c. salt water
 - d. ice
2. Which river runs through Dallas Fort Worth area?
 - a. Colorado River
 - b. Brazos River
 - c. Trinity River
 - d. Red River
3. Where does this river empty out into?
 - a. Gulf of Mexico
 - b. Atlantic Ocean
 - c. Pacific Ocean
 - d. Great Salt Lakes



Match the following words to their definition:

- | | |
|-----------------------------|---|
| 4. ____ Turbidity | A. A black and white circular shaped tool used to help measure turbidity |
| 5. ____ Macro invertebrates | B. another name for a weed |
| 6. ____ Saturation | C. the zone near and around a body of water that is the home to many plants and animals |
| 7. ____ Secchi disk | D. the gradual destruction of land caused by wind, rain, and human activity |
| 8. ____ Watershed | E. animal with no backbone and large |



Identify Program Mission Overlap

Communicate About Who You Know

Identify Priorities
&

Be Realistic About Constraints

Define Desired Community Impact

Be Open to Adaptation

Share Your Success

Successful Strategies

Self- Initiated Educators

- Enthusiasm
- Preparation
- Organization
- Student Perception



Successful Strategies

Group Size

- 20 Students
- Hands on Interactions





Identify Program Mission Overlap

Communicate About Who You Know

Identify Priorities
&

Be Realistic About Constraints

Define Desired Community Impact

Be Open to Adaptation

Share Your Success



Tarrant Regional Water District



THANK YOU!

SARAH.GRELLA@TRWD.COM