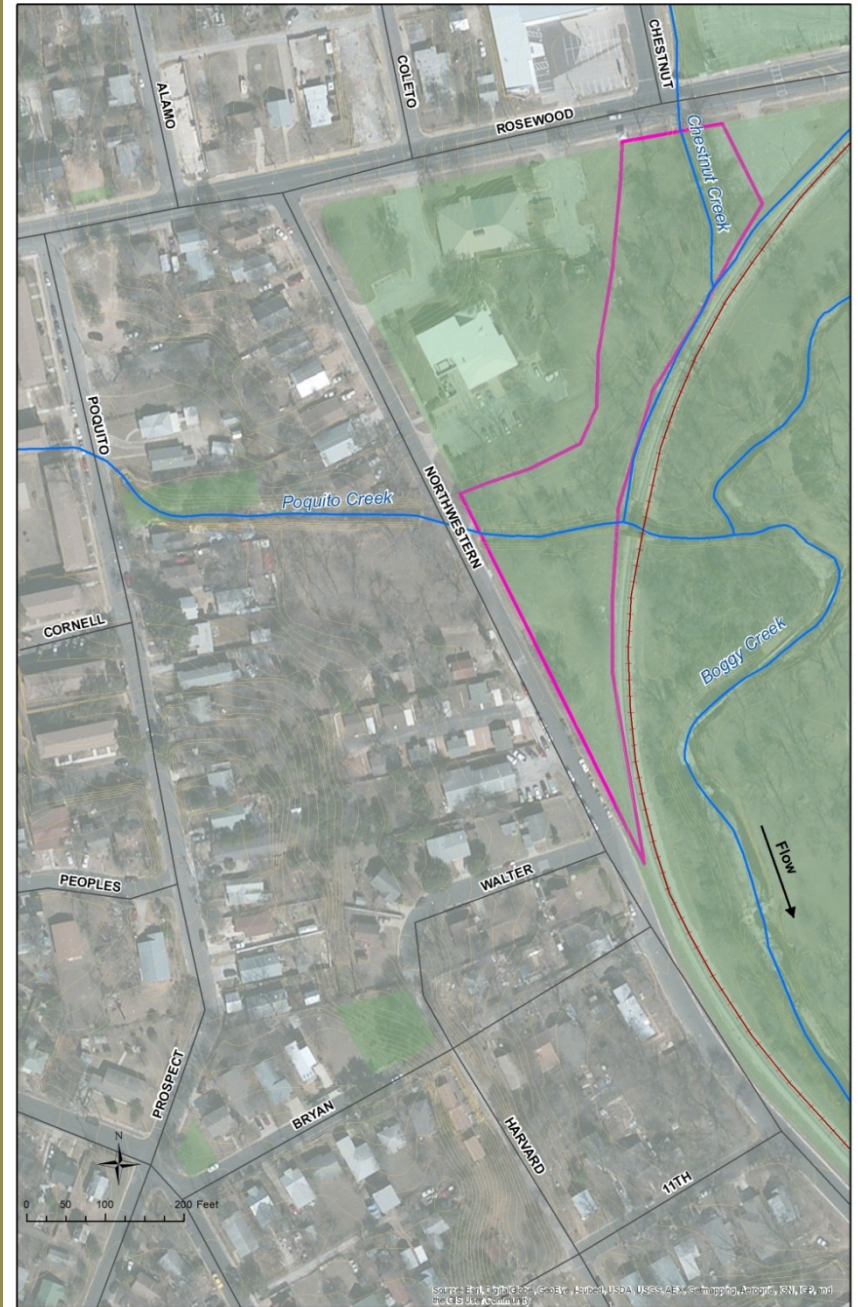
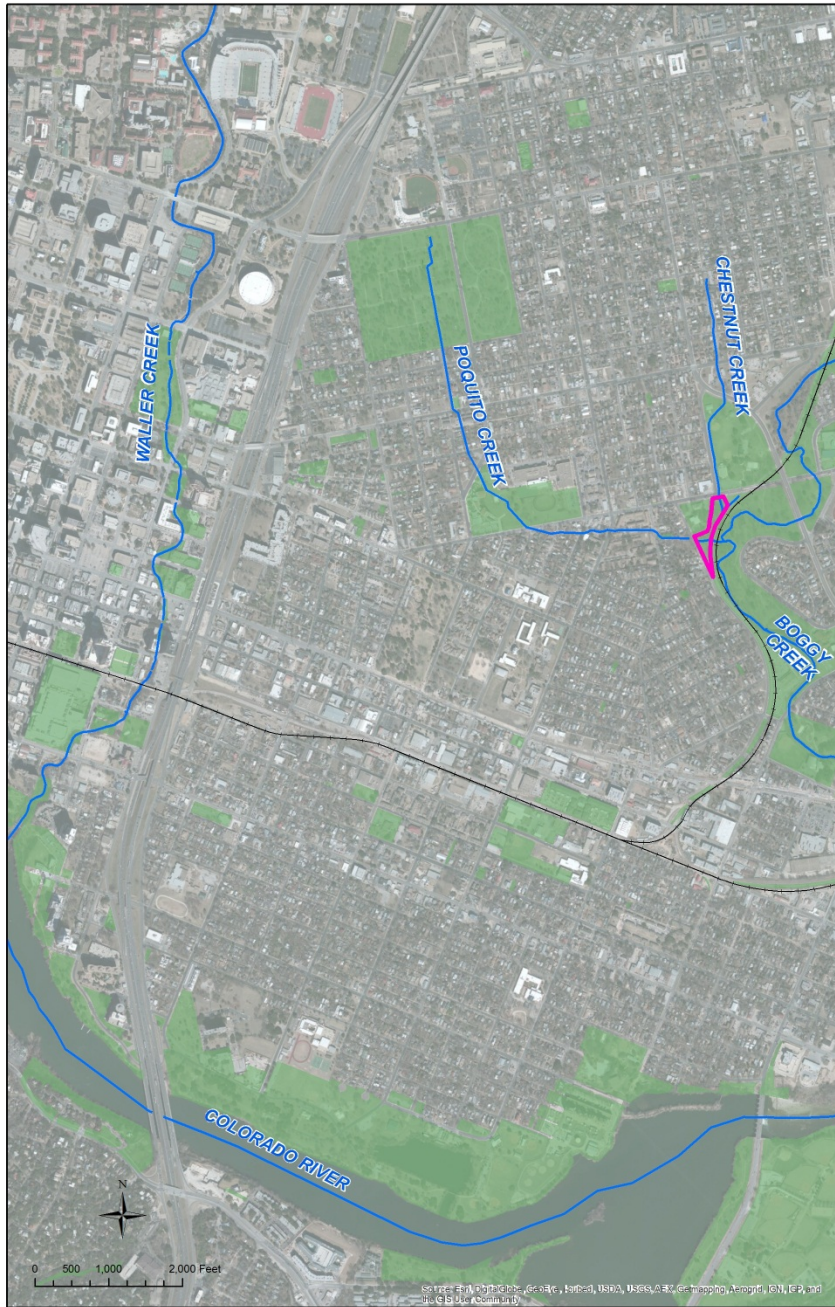


Poquito and Chestnut Creek Restoration and Connection



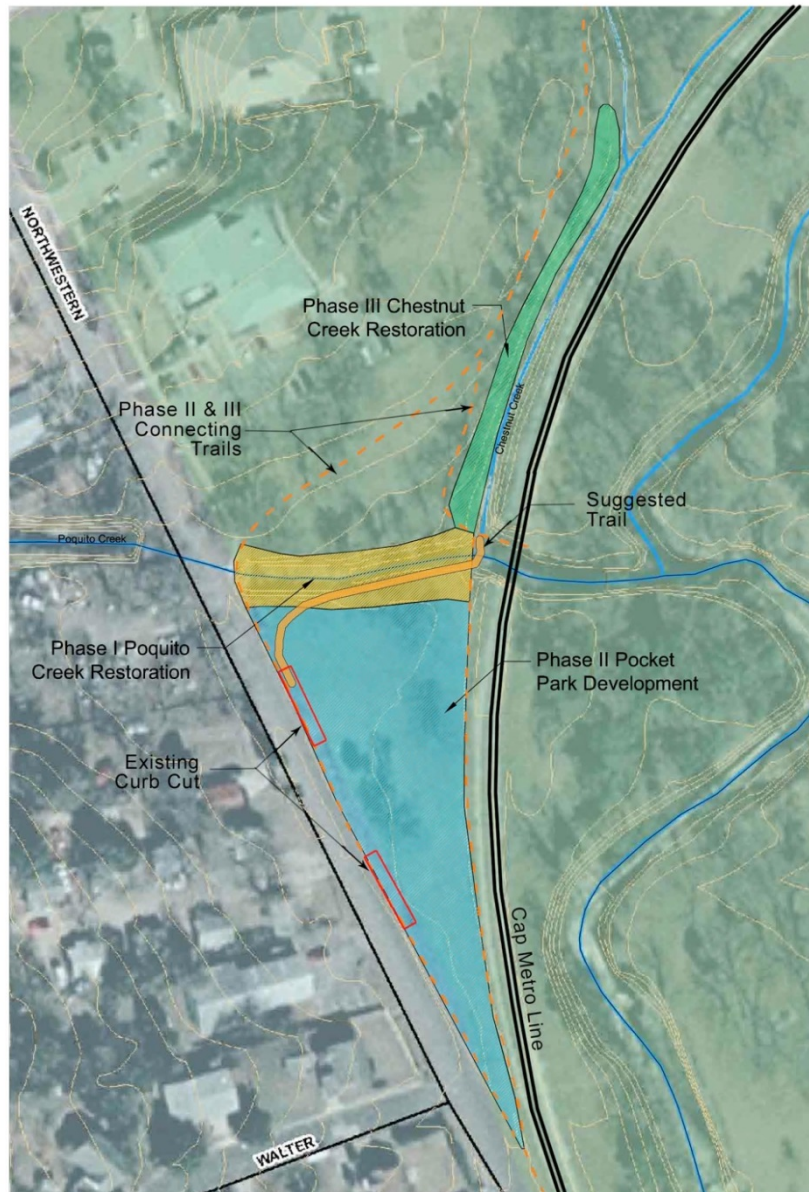
Justin T. Stewart, AICP

A non profit geared towards improving access and ecology of urban creek corridors.





1 inch = 50 feet



Poquito Creek Restoration Design

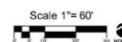


Figure 1

Poquito Creek Restoration Phase Map

5/30/2012





Harvesting black willow (*Salix nigra*)
from proximate parkland





DESIGN LEGEND

Large Trees (15 gallon)

- Mix of:
 - Chinkapin Oak (2)
 - Bur Oak (1)
 - Anaqua (1)

- Mixture of:
 - Cottonwood (4)
 - Sycamore (3)

- Mixture of:
 - Bald Cypress (4)
 - Cedar Elm (3)

Medium Trees (5 gallon)

- Mixture of:
 - Possumhaw (5)
 - Button Bush (4)

Wetland Plants

- Sandbar Willow Vertical Bundles 7' O.C. (13)

- Meadow Sedge/ Creek Sedge Plugs 5' O.C. (31)

- Spikerush Plugs 5' O.C. (21)

- Seed Mix (Purpletop, Inland Seaots, Prairie Wildrye, Sideoats Grama, Virginia Wildrye, Plains Bristlegrass)- .12 Acres, 15 lbs per Acre

Grasses (1gallon)

- Mistflower (17)

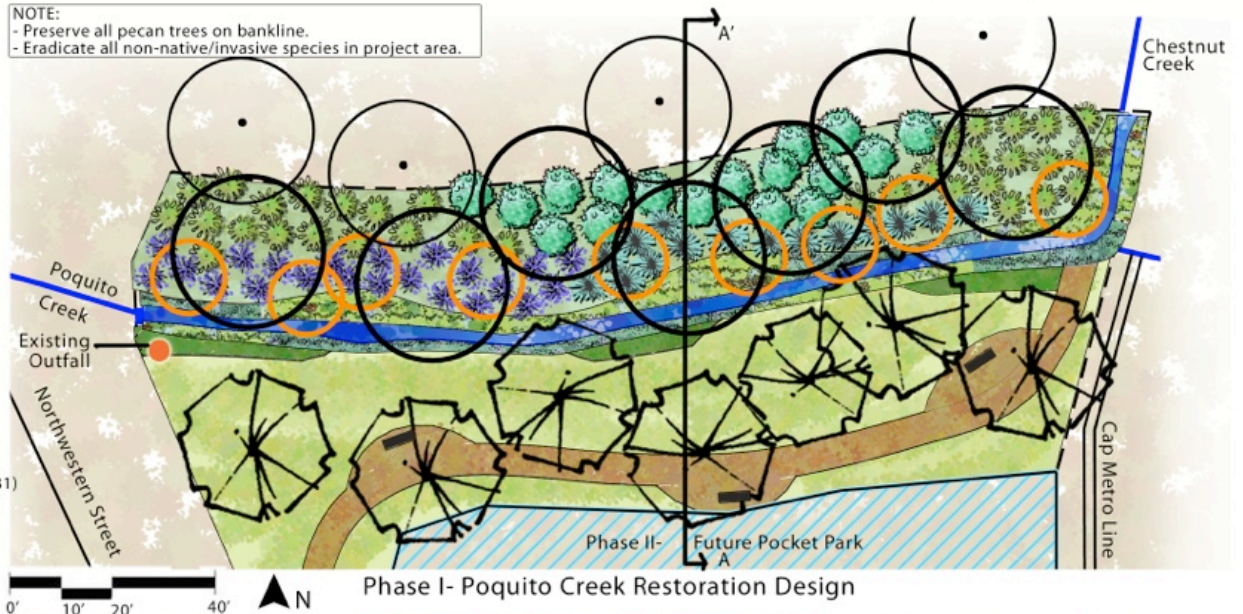
- Purpletop (23)

- Inland Seaots (38)

- Bushy Bluestem (17)

NOTE:

- Preserve all pecan trees on bankline.
- Eradicate all non-native/invasive species in project area.



Phase I - Poquito Creek Restoration Design



Existing Conditions of Poquito Creek



Restored Cross-section of Poquito Creek

Poquito Creek Restoration Design

Phase I Restoration Design

Figure 2

5/30/2012









1 inch = 50 feet







Snake Culvert

Art in Public Places in dry retention pond.

The snake imagery alludes to connections with nature and ancient mystic religions. The dual function of the sculpture, as art And a culvert, suggests

“a rite of passage for the water entering back into the environment to once again start its life again. The sculpture becomes a marker to this water ritual with the snakes as its guide.”

-T. Paul Hernandez (1990)

Zoom Out

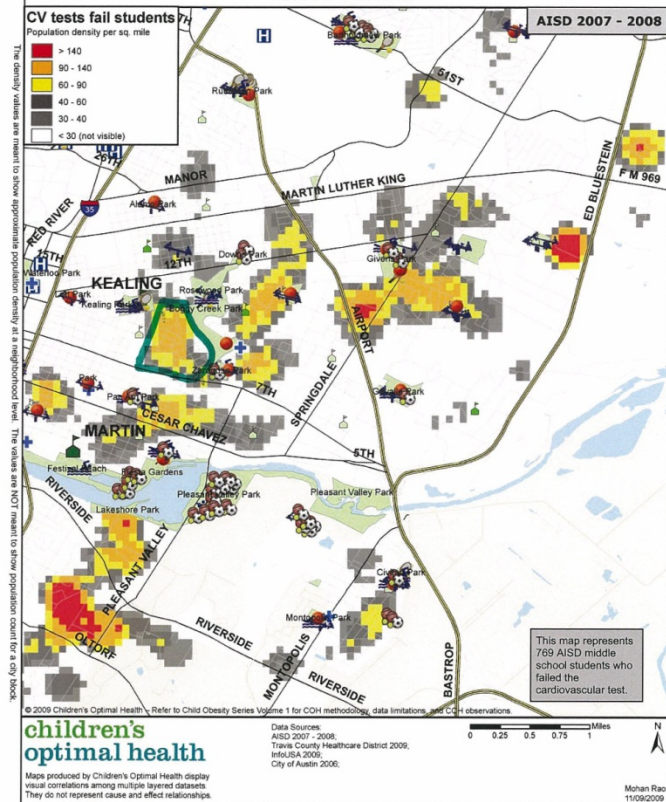


1 inch = 50 feet

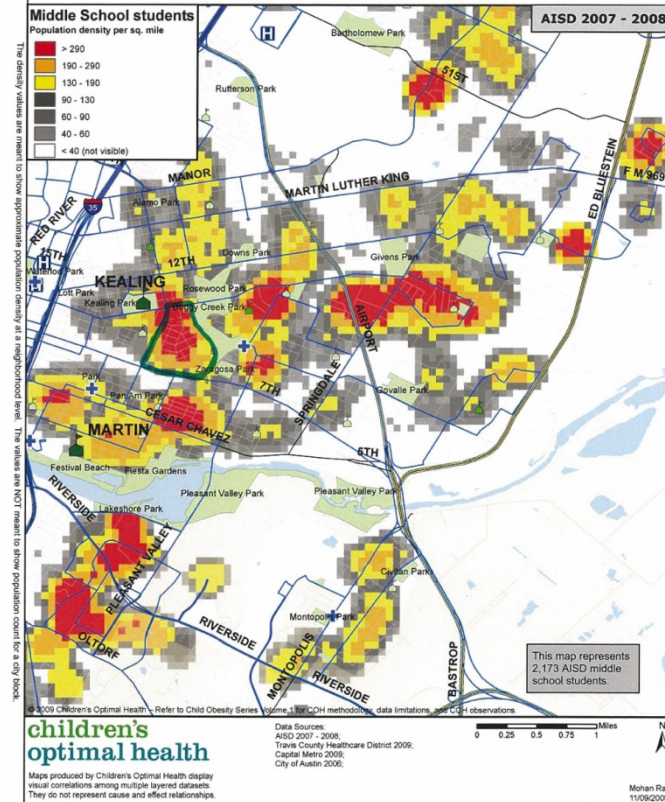


*Source: Esri, DigitalGlobe, GeoEye, Earthstar (United States), USDA, USGS, AeroGRID, IGN, IGP, and the GIS User Community

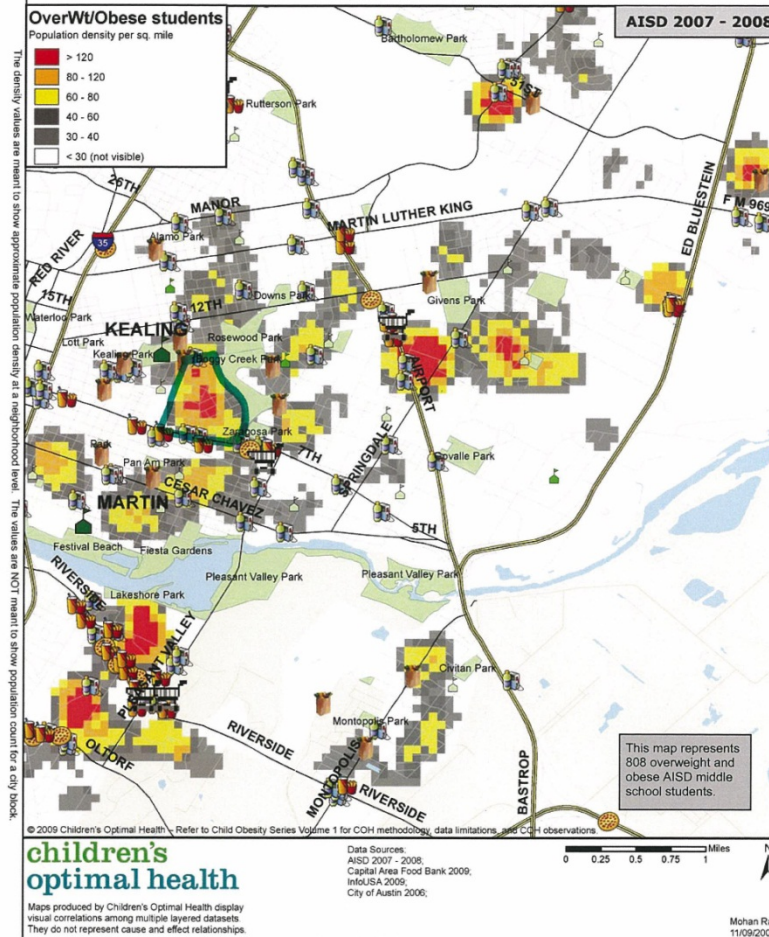
Are there concentrated areas where AISD Middle School students who failed Cardiovascular tests live? East Central



Are there concentrated areas where AISD Middle School students live? East Central



Are there concentrated areas where Overweight and Obese AISD Middle School students live? East Central





Supporting Plans for Poquito Connection:

- Rosewood Choice Draft Transformation Plan
- Blackshear Prospect Hills Neighborhood Plan
- Imagine Austin



Design charrette led by
National Park Service













Lessons Learned

- Zoom in, zoom out. Observe.
- Don't force your ideas, frame it and ask questions.
- Share what you know, knowing you don't know it all
- Get inspired, be creative
- Be reasonable, share mistakes
- Give credit

Poquito Creek Restoration and Connection

Creek People

Austin Parks Foundation

Austin Parks and Recreation

COA Watershed Protection Department

Ladybird Wildflower Center

Fred Phillips Consulting

Taurus Irrigation

Rain Lily Design

National Park Service

American Youthworks

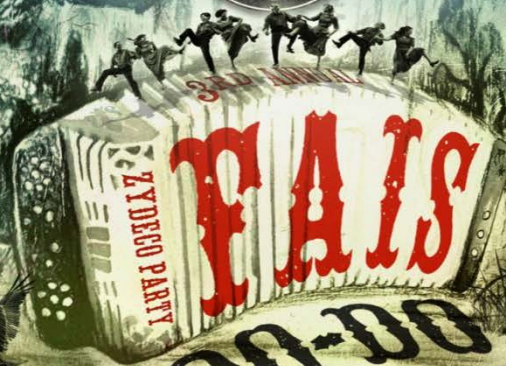
Channel Austin

Keep Austin Beautiful

Girard Kinney

Friends of Boggy Creek

Blackshear, Rosewood, and Cherrywood Neighborhood Associations



DO-DO

Try all entries and place a vote!
**COMPLIMENTARY
BEER & BLOODY MARYS**

Live Music by
**The GULF COAST
PLAYBOYS**

TICKETS
\$35
AT THE DOOR

BENEFITING
**Creek
people**
creekpeople.org



**NOON
to 4 PM**

LAUREN'S
FRESH SQUEEZED
BLOODY
MARY MIX

DRIPPING
SPRINGS



**914 SHADY LANE
MARCH 28
AUSTIN, TEXAS**

FARMHOUSEDELIVERY.COM