



# ***What's a Watershed Protection Plan Process?***

Linda Shead, Watershed Coordinator



**HARC**



# What is a Watershed?

- An area of land that water flows across, through, or under on its way to a stream, river, lake, ocean or other body of water.
- A watershed is like one big bathtub...

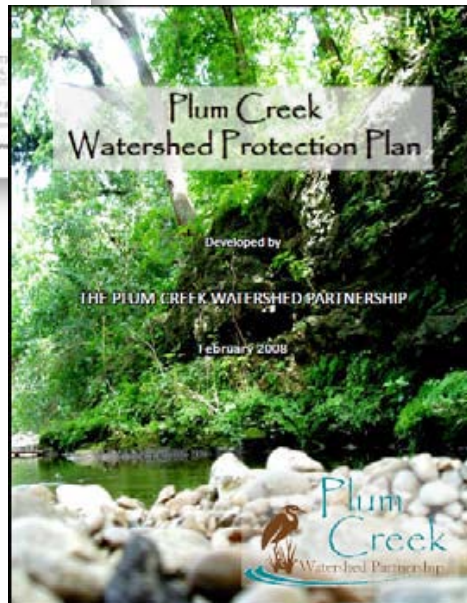
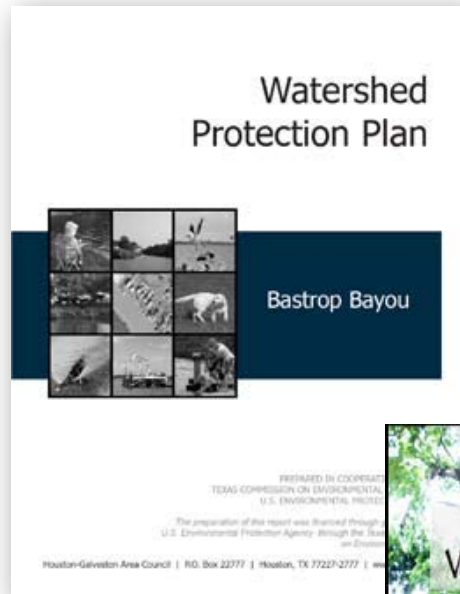


We find watersheds EVERYWHERE.  
ALL land area is part of a watershed.  
We ALL live in a watershed.

*From: Texas Watershed  
Steward Workshop , 6/25/2013*



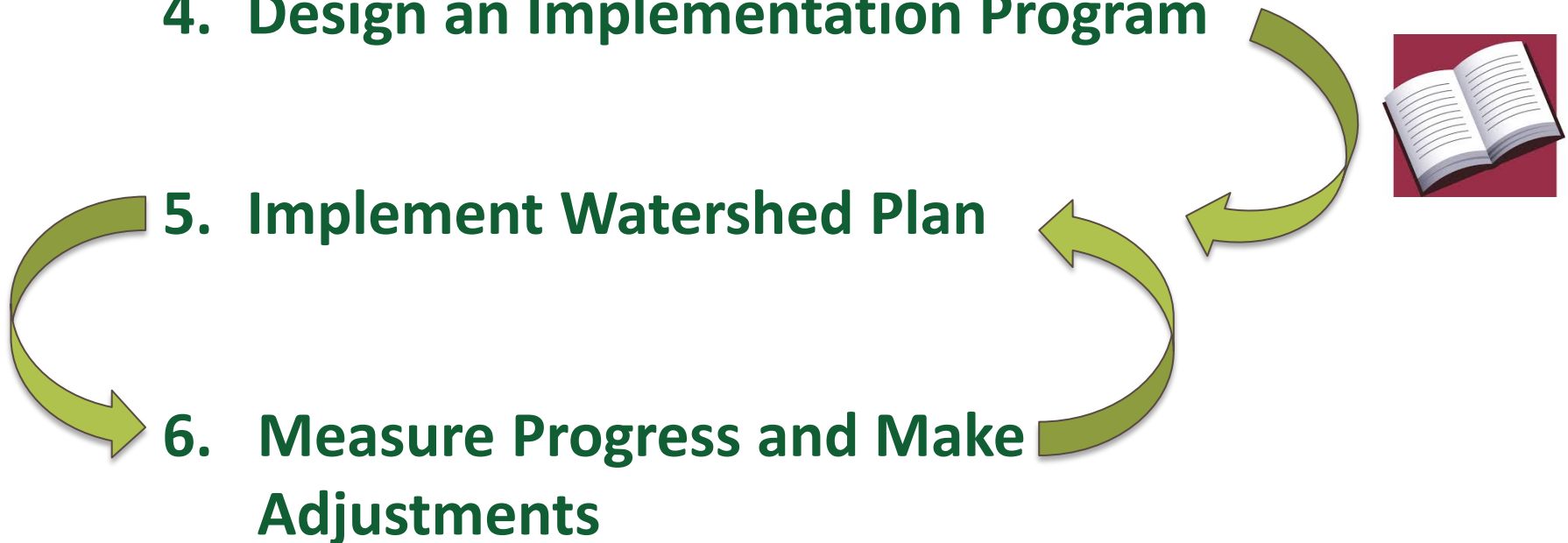
# ***What is a Watershed Protection Plan?***



- **Written plan**
- **Stakeholder-driven**
- **Local**
- **Voluntary actions**
- **To achieve water quality standards**
- **Flexible**

# ***Steps in a Watershed Protection Plan Process***

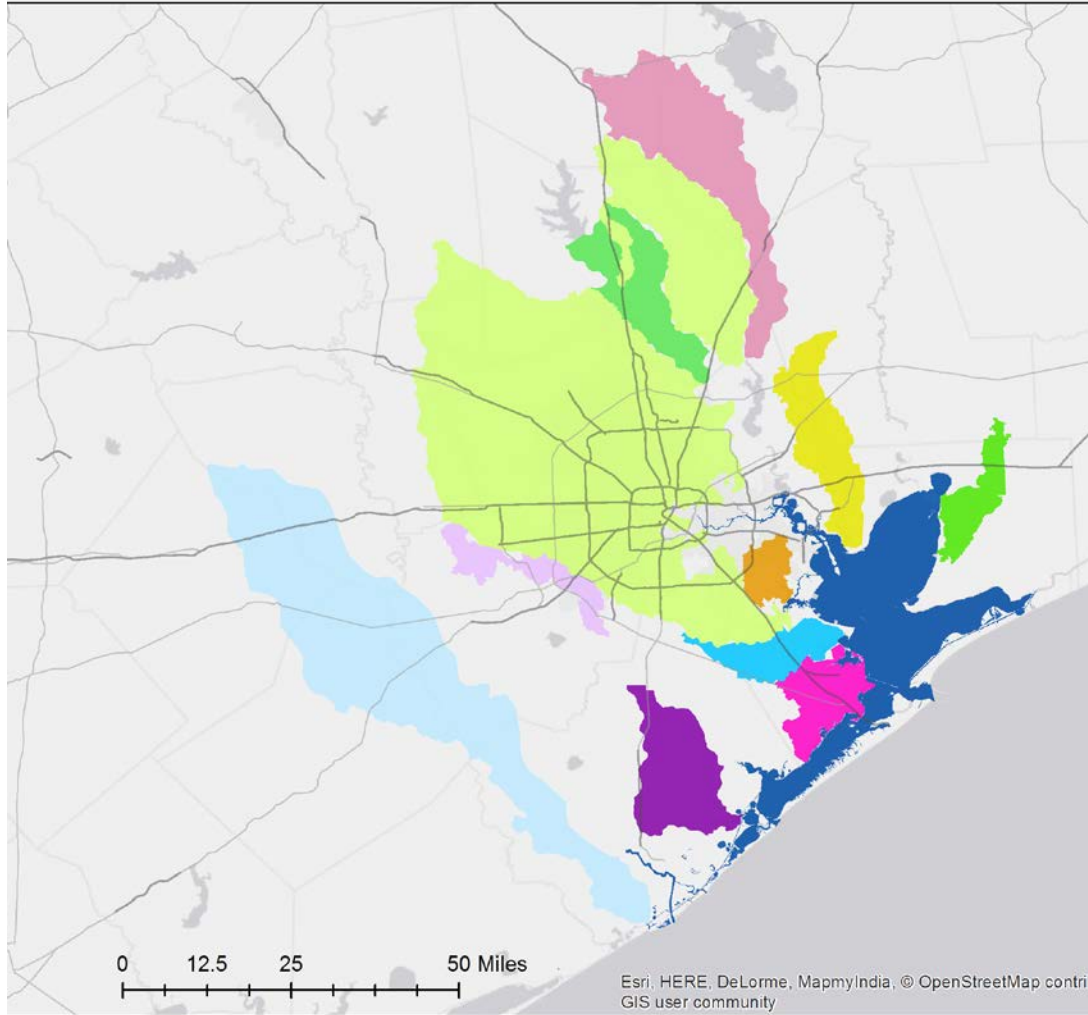
- 1. Build Partnerships**
- 2. Characterize the Watershed**
- 3. Finalize Goals and Identify Solutions**
- 4. Design an Implementation Program**





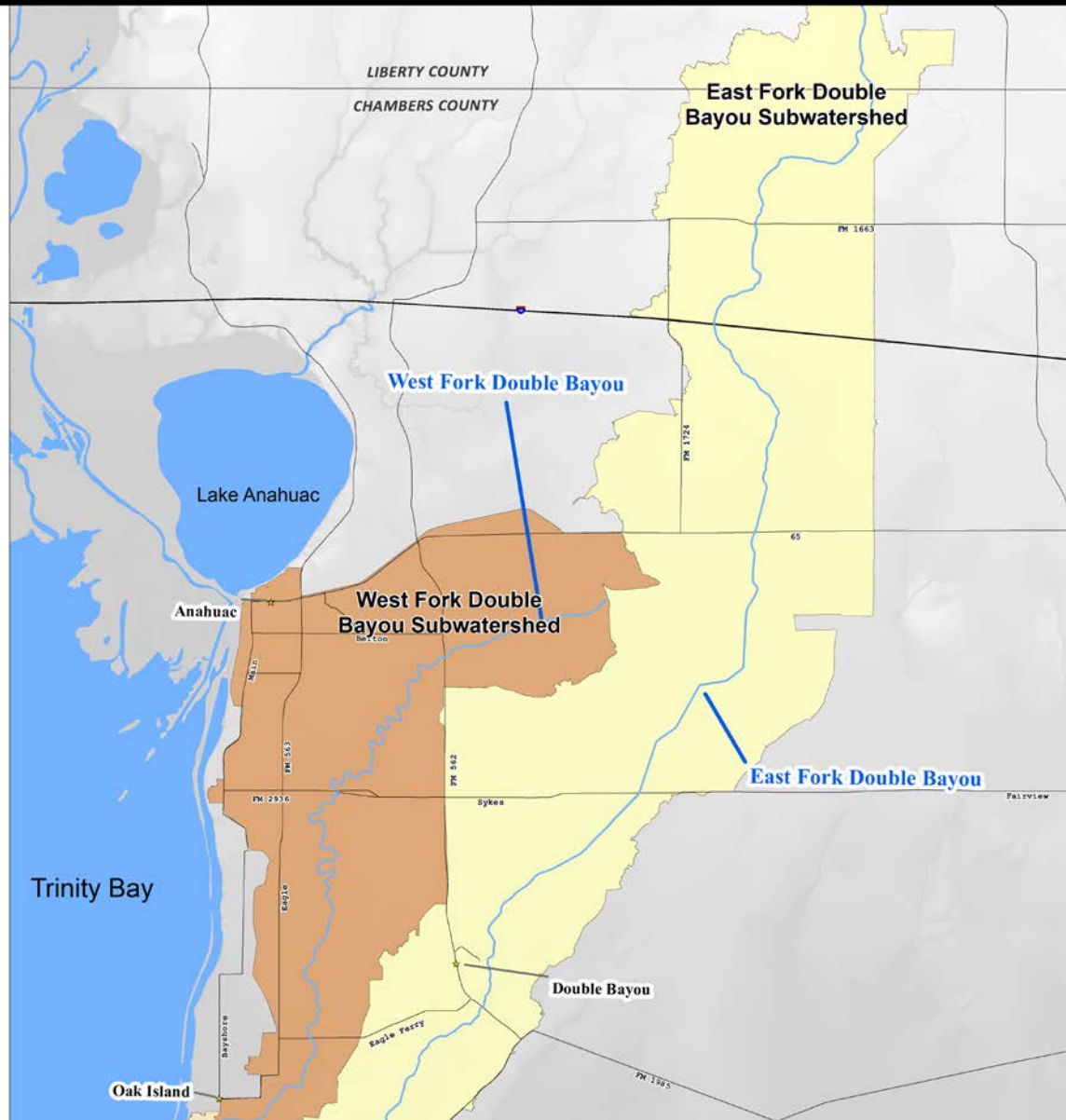


# ***Other Watershed Projects in the Region***



## **Watershed Boundaries**

-  Armand Bayou
-  Bacteria Implementation Group
-  Bastrop Bayou
-  Cedar Bayou
-  Dickinson Bayou
-  Double Bayou
-  East Fork San Jacinto River
-  Highland Bayou
-  San Bernard
-  Upper Gulf Coast Oyster Waters
-  Upper Oyster Creek
-  West Fork San Jacinto River





## ***Next Steps***

- **General Meeting Schedule**
  - Typically bi-monthly
  - Workgroups and special events in between
- **Meeting Logistics**
  - 2<sup>nd</sup> Tuesdays
  - Double Bayou Community Building
- **October 21 Meeting**
  - Topic: Model Results on Bacteria Contributions





# ***The Double Bayou “WPP” Team***

## ***Texas State Soil & Water Conservation Board***



- **Brian Koch**, Project Manager, Wharton
- **TJ Helton**, Program Coordinator, Temple

## ***U.S. Geological Survey, Texas Water Science Center, Gulf Coast Program***



- **Mike Lee**, Hydrologist
- **Sam Rendon**, Hydrologist

## ***Houston Advanced Research Center***



**HARC**

- **Stephanie Glenn**, Senior Research Scientist
- **Ryan Bare**, Research Assistant
- **Brad Neish**, GIS

## ***Shead Conservation Solutions***



- **Linda Shead**, Watershed Coordinator
- **Brandie Minchew**, Outreach Coordinator
- **Abby Ficklin**, Meeting Assistant