

Texas Conservation Corps at American YouthWorks



**Youth Engagement in Ecological
Restoration: A Useful Tool For Land
Managers and Professional Development**



An Introduction to TxCC

- **An AmeriCorps National Service program**
 - Youth and young adults
 - Participants earn a living stipend and an education award
- **TxCC**
 - Focus on Leadership Development, Habitat Restoration and Management, Trail Construction and Maintenance, and Disaster Response and Mitigation
 - Work with a diverse group of agencies, both locally and regionally

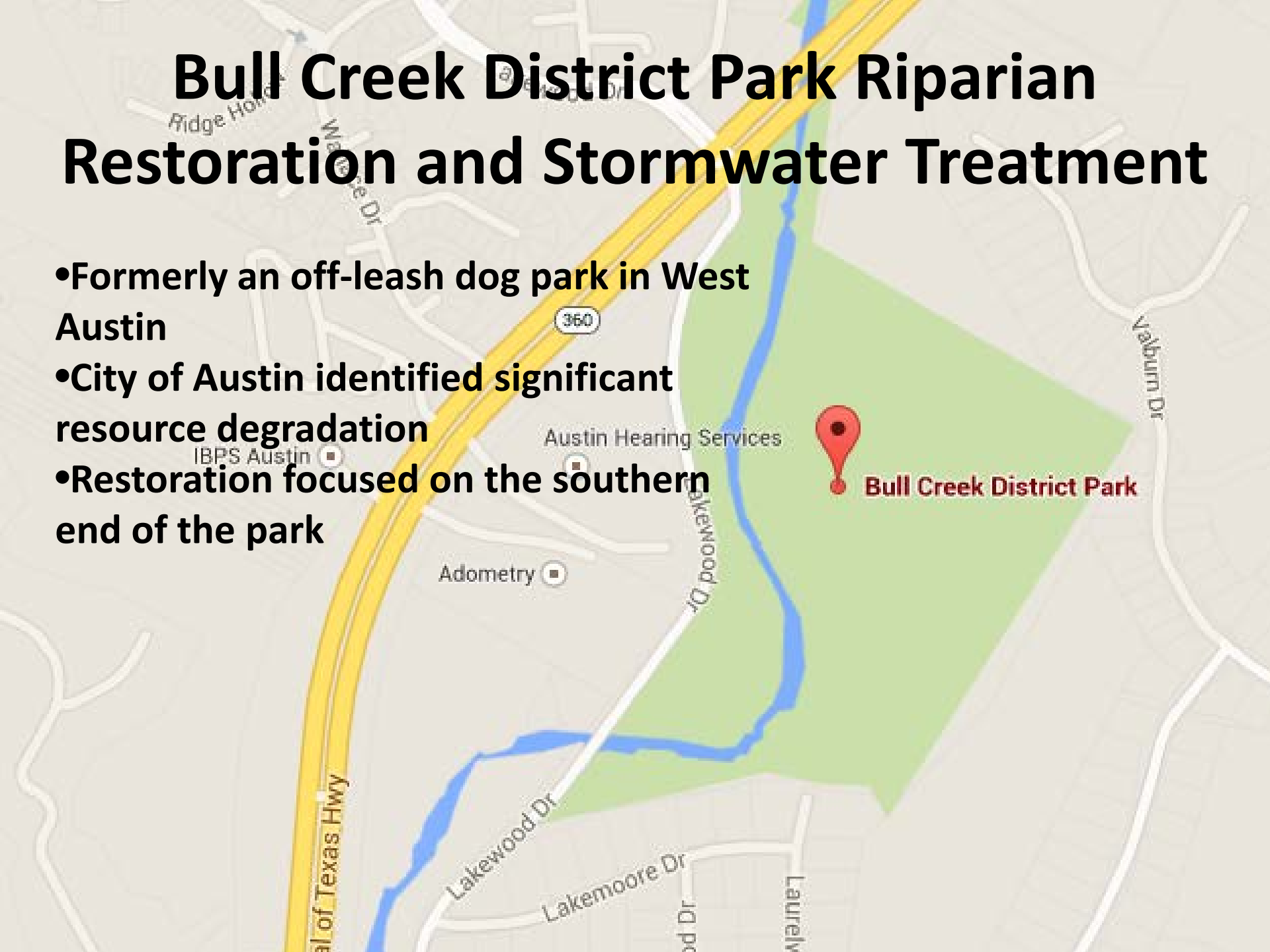
Overview of 3 Projects

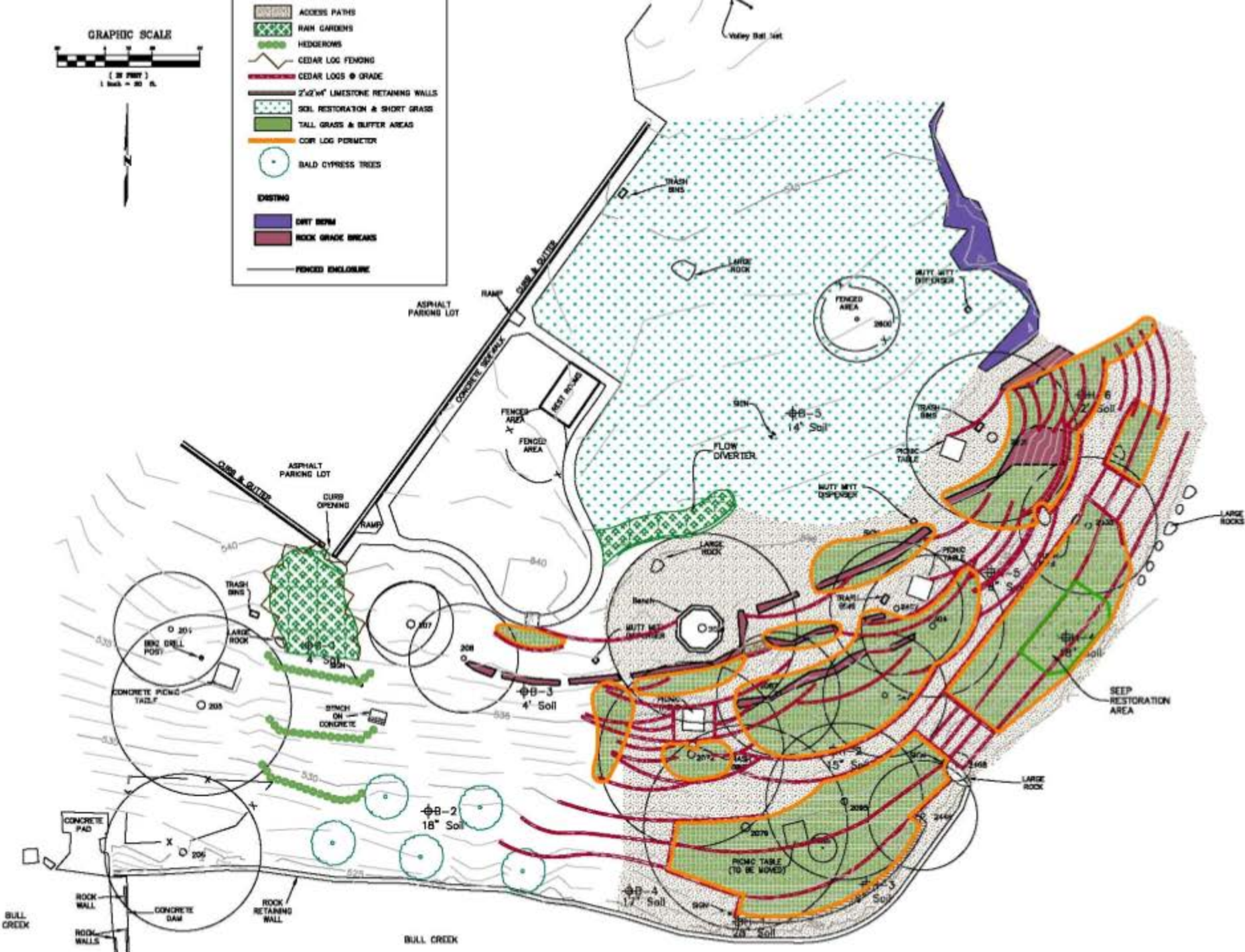
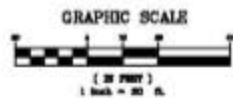
- **Bull Creek District Park Riparian Restoration and Stormwater Treatment (2010)**
- **Barton Creek Greenbelt Trail Crew (2011)**
- **San Antonio Acequia Restoration (On-going)**



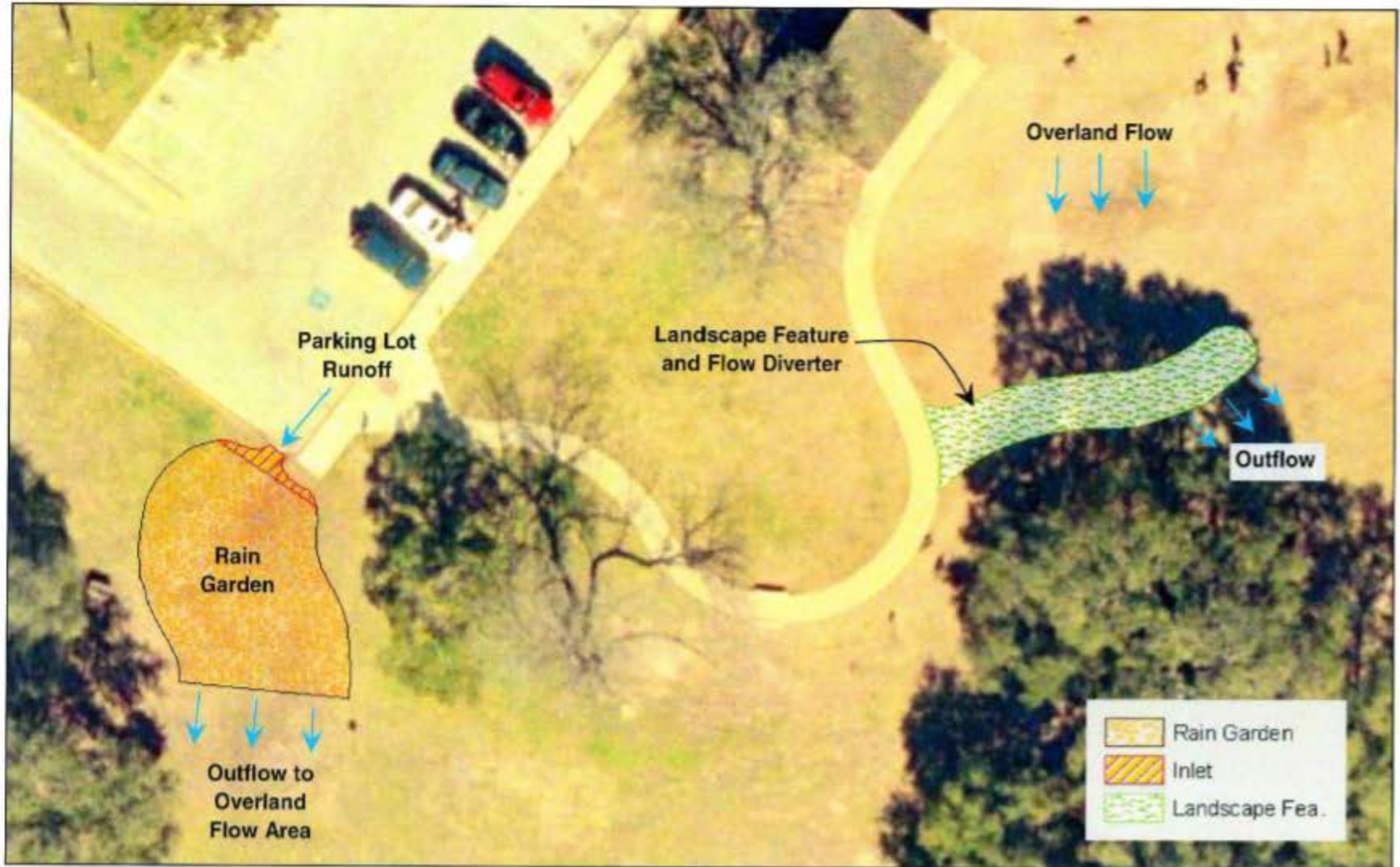
Bull Creek District Park Riparian Restoration and Stormwater Treatment

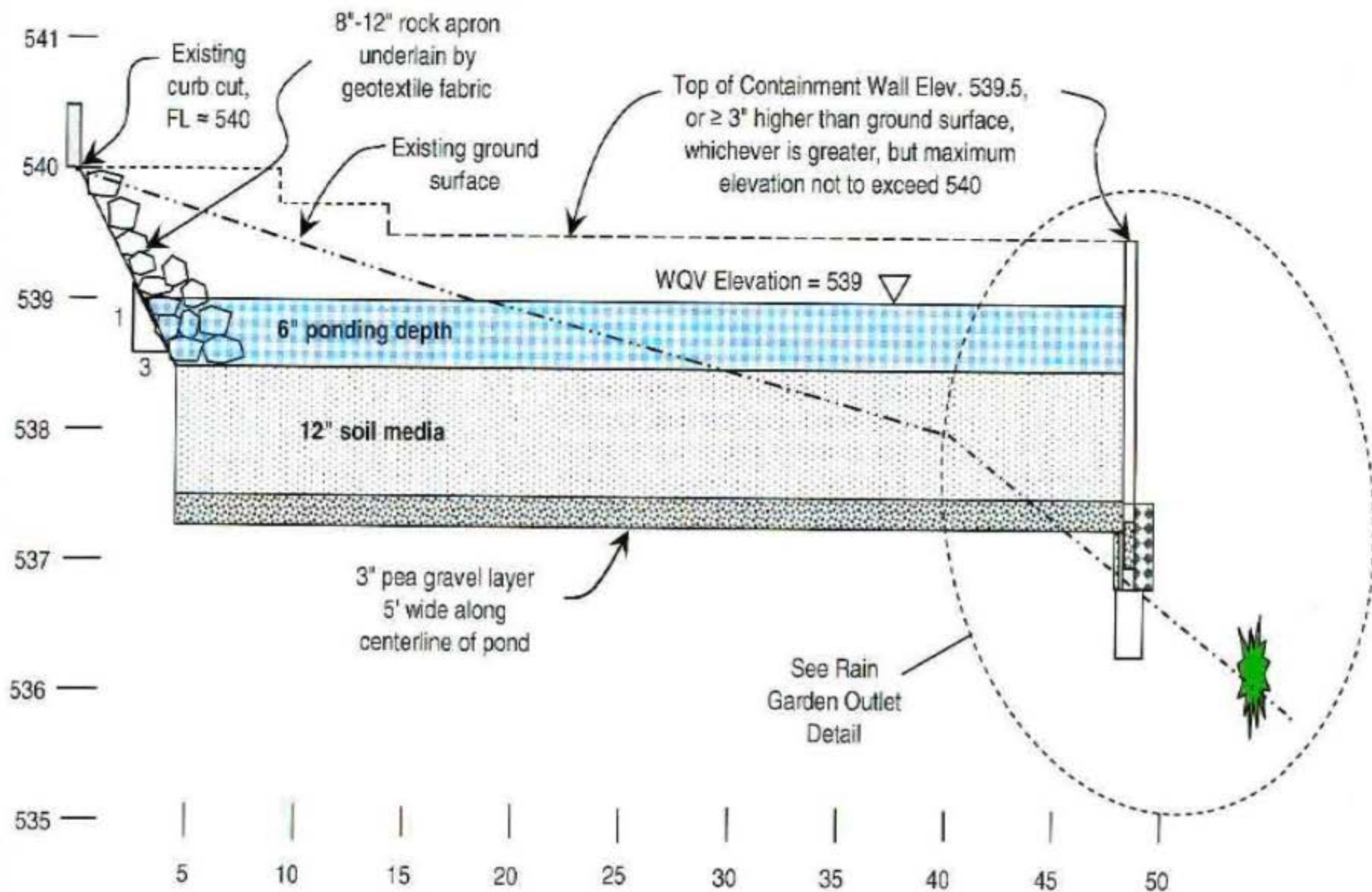
- Formerly an off-leash dog park in West Austin
- City of Austin identified significant resource degradation
- Restoration focused on the southern end of the park





Plan View of Bull Creek District Park Water Quality Features





Profile A-A Through Centerline of Rain Garden

Rain Garden Construction



2010/02/24



2010/04/08

**City Of Austin
also specified:**



**Cedar and Limestone
Terracing**



Permanent Soil Retention Fabric

Coir Logs

Cedar Exclusion Fencing

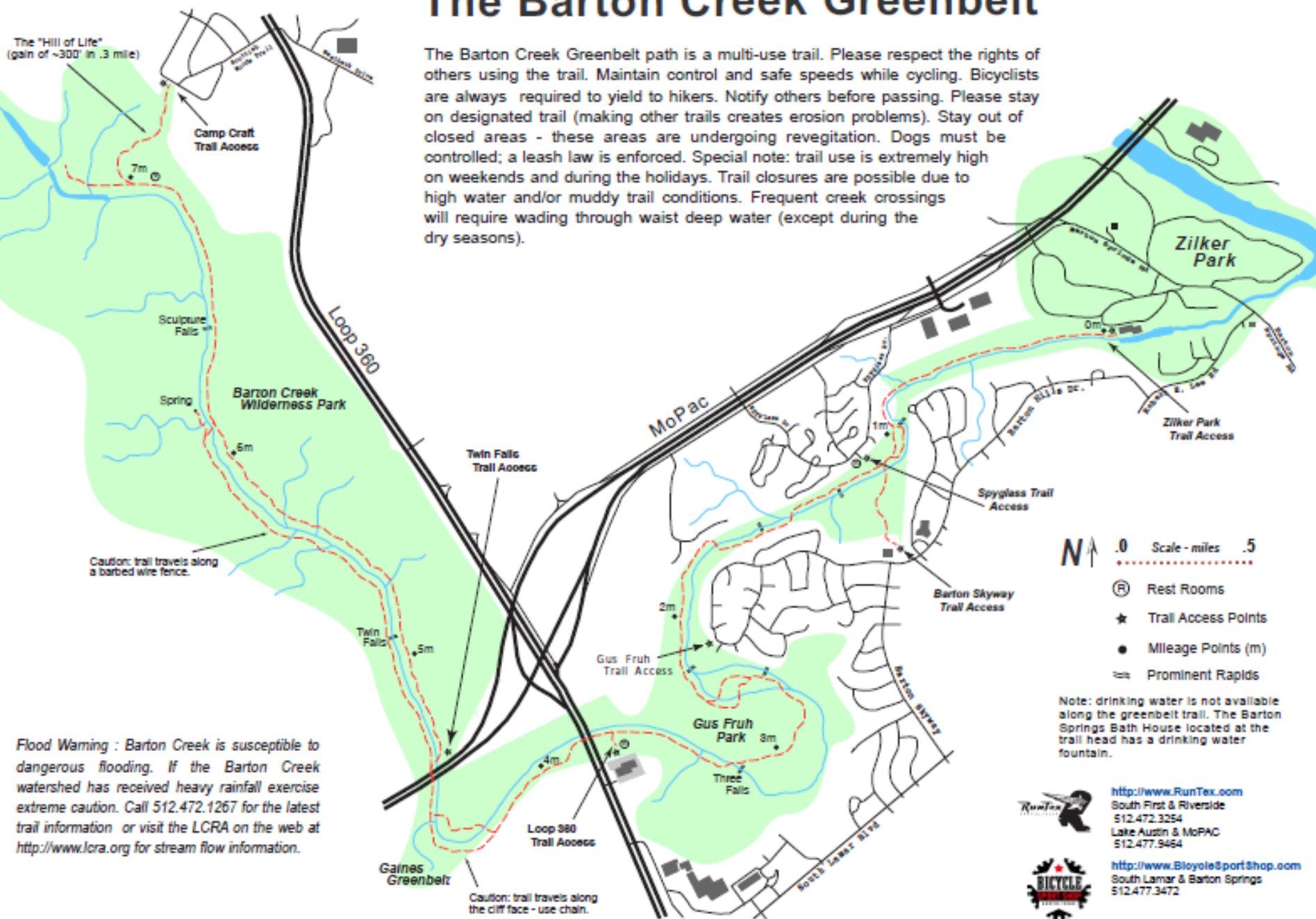


Significant Flood Event in September 2010



The Barton Creek Greenbelt

The Barton Creek Greenbelt path is a multi-use trail. Please respect the rights of others using the trail. Maintain control and safe speeds while cycling. Bicyclists are always required to yield to hikers. Notify others before passing. Please stay on designated trail (making other trails creates erosion problems). Stay out of closed areas - these areas are undergoing revegetation. Dogs must be controlled; a leash law is enforced. Special note: trail use is extremely high on weekends and during the holidays. Trail closures are possible due to high water and/or muddy trail conditions. Frequent creek crossings will require wading through waist deep water (except during the dry seasons).



Flood Warning : Barton Creek is susceptible to dangerous flooding. If the Barton Creek watershed has received heavy rainfall exercise extreme caution. Call 512.472.1267 for the latest trail information or visit the LCRA on the web at <http://www.lcra.org> for stream flow information.

Invasive Species Removal

**Targeted Species: Ligustrum,
Nandina, Chinaberry**

**Over 100 Acres Treated and
Managed**



Bank Stabilization

Twin Falls, MoPac and
Gus Fruh



Trail Work

Drains, Erosion Control Features,
Stepping Stones, Signage, Flood
Debris Removal



A map of the San Antonio Acequia Restoration area. The map shows a network of acequias (irrigation canals) in blue, including Espada Ditch, San Juan Ditch, and Sixmile Creek. Key locations marked include Espada Park (green area with a tree icon), Mission Road Ministries (square icon), Mission San Juan Capistrano (square icon), and Oldcastle Precast (square icon). Roads shown include Mission Rd, Ashley Rd, Espada Rd, Villamain Rd, and S Presa. Highway 122 is also visible. The title "San Antonio Acequia Restoration" is overlaid in large black text.

San Antonio Acequia Restoration

What is an Acequia?

Example: Acequia Espada and
Acequia San Juan



**Invasive Species
Removal in
Partnership with the
National Park Service
Exotic Plant
Management Team
(EPMT)**

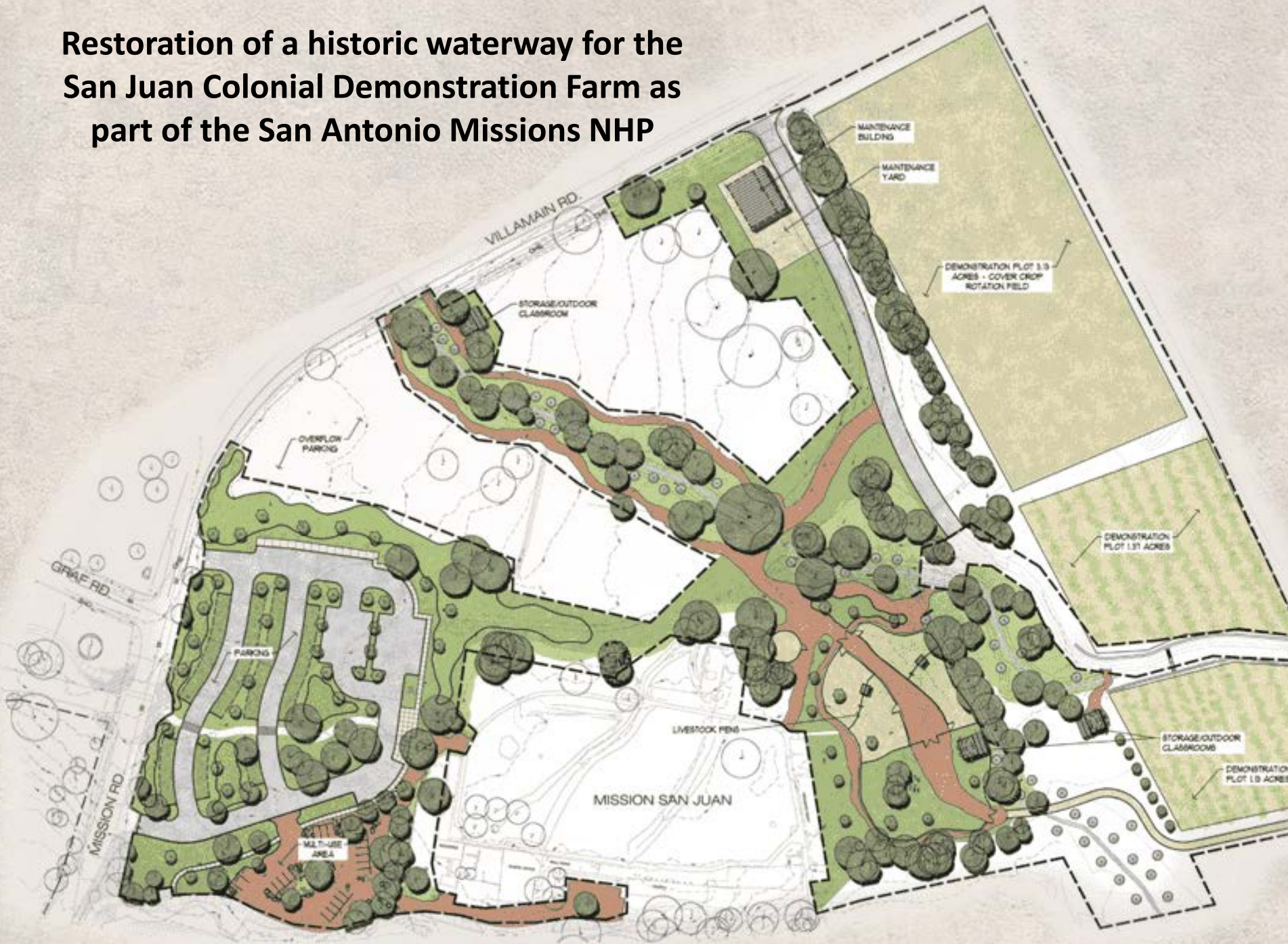
Brush Management and Creek Cleanup San Antonio Missions NHP Maintenance



**In Partnership with
San Antonio Missions
National Historic Park**



**Restoration of a historic waterway for the
San Juan Colonial Demonstration Farm as
part of the San Antonio Missions NHP**



Partnerships, Pre-professionals, and the Public

